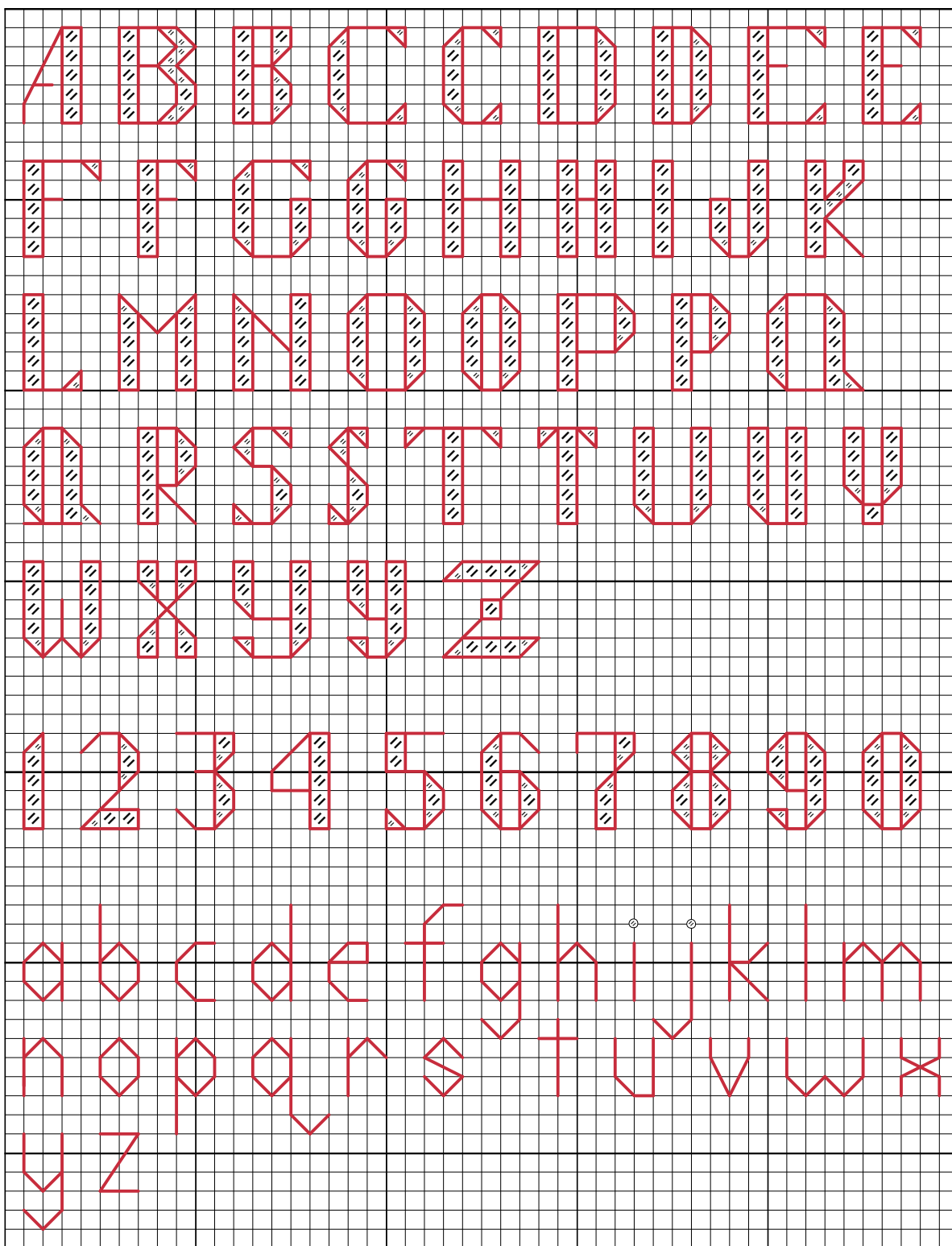


"Alphabet 01" by Katherine MartinTripp



Katherine Martin Tripp

- Legend:
■ DMC-321
Backstitches:
— DMC-321
French Knots:
⊙ DMC-321

Alphabet 01



Author: Katherine Martin Tripp
Company: Extra Mile Mercantile
Copyright: Katherine Martin Tripp
Website: better-cross-stitch-patterns.com
Fabric: Evenweave
Grid Size: 50W x 65H
Design Area: 5.33" x 7.00" (48 x 63 stitches)

In the Photograph:

The "Alphabet 01" is stitched on 18-count Aida over two threads. I used DMC floss:

- 3 strands for cross stitches
- 2 strands for backstitches
- 2 strands for French knots

Description: Block letters, standard/straight

Characters Included:

- Upper Case Letters
- Lower Case Letters
- Numbers
- Punctuation

Height:

- The upper case letters are 5 stitches high.
- The lower case letters without ascenders or descenders (ex: a, c, o) are 3 stitches high.
- The lower case letters with only ascenders (ex: b, d, h) or only descenders (ex: g, p, y) are 5 stitches high.
- The lower case "j", with a descender and a dot above, is 6 1/2 stitches high.

Width:

These letters have varying widths. When possible, both wide and narrow versions of some letters are provided. These should help you squeeze text into shorter lines or expand into longer ones.

Stitch Complexity:

- Full cross stitches
- 1/4 and/or 3/4 cross stitches
- Backstitches
- French knots

For the partial stitches that make up the angles, you can use either 1/4 cross stitches, letting the backstitch outline complete it; or, use 3/4 cross stitches with the outline for a fuller look. The fabric and the floss strand count will affect your choice for each project. If you are uncertain, try stitching a few sample letters in the corner of your fabric.

Learn any unfamiliar stitches by clicking on the "How To..." button on the left menu of the Home page.

Floss:

It is assumed that you will change the floss color to reflect your tastes and to coordinate with the rest of your project. Use the same number of strands that you are using throughout the rest of your cross stitch pattern.

How to Fit Text into a Design:

To learn how to select and adapt cross stitch alphabets, click on the "Alphabets" button on the left menu of the Home page. Thoroughly read "The 123's of the Counted Cross Stitch Alphabet" to learn how to select and adapt cross stitch alphabets.