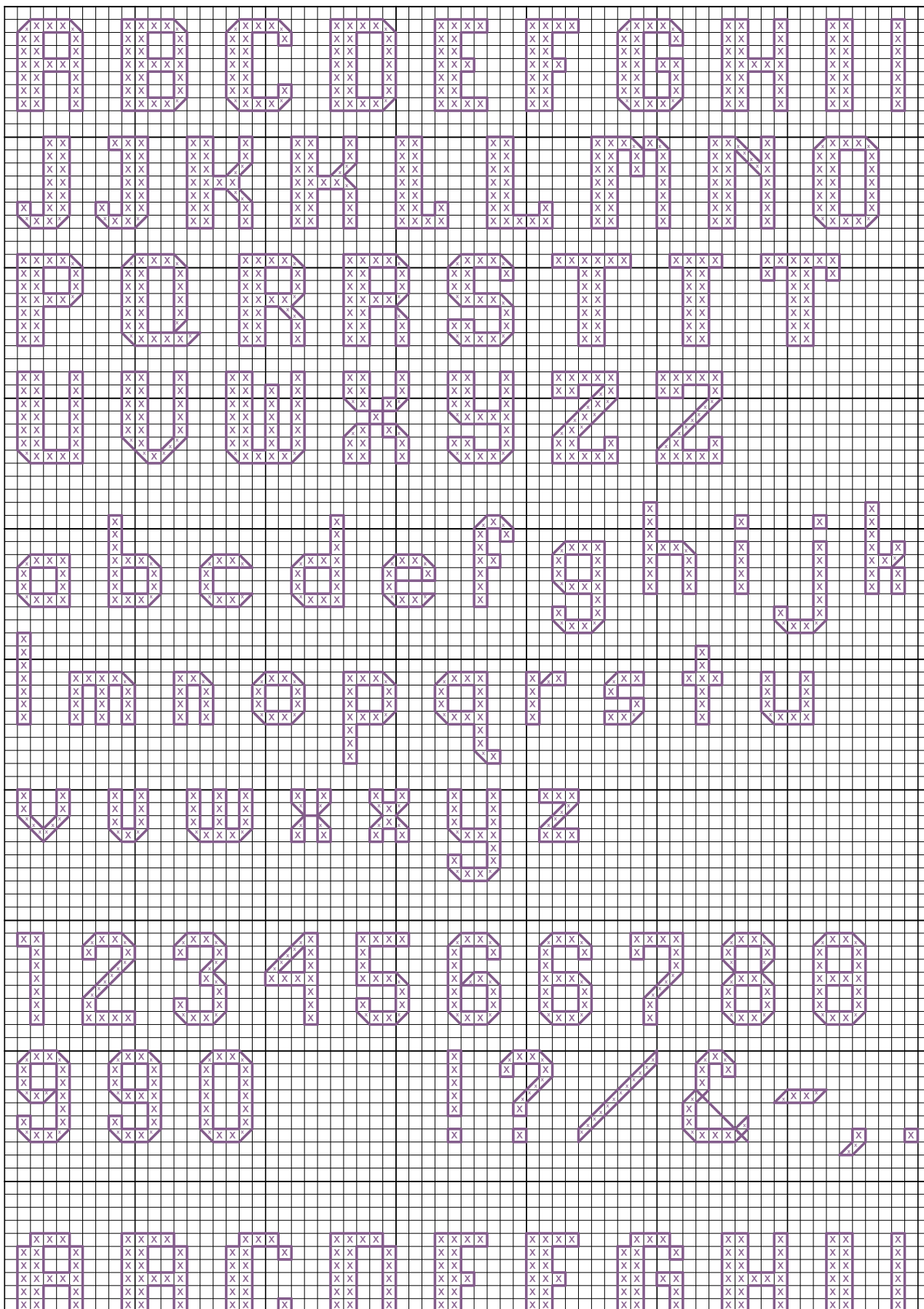
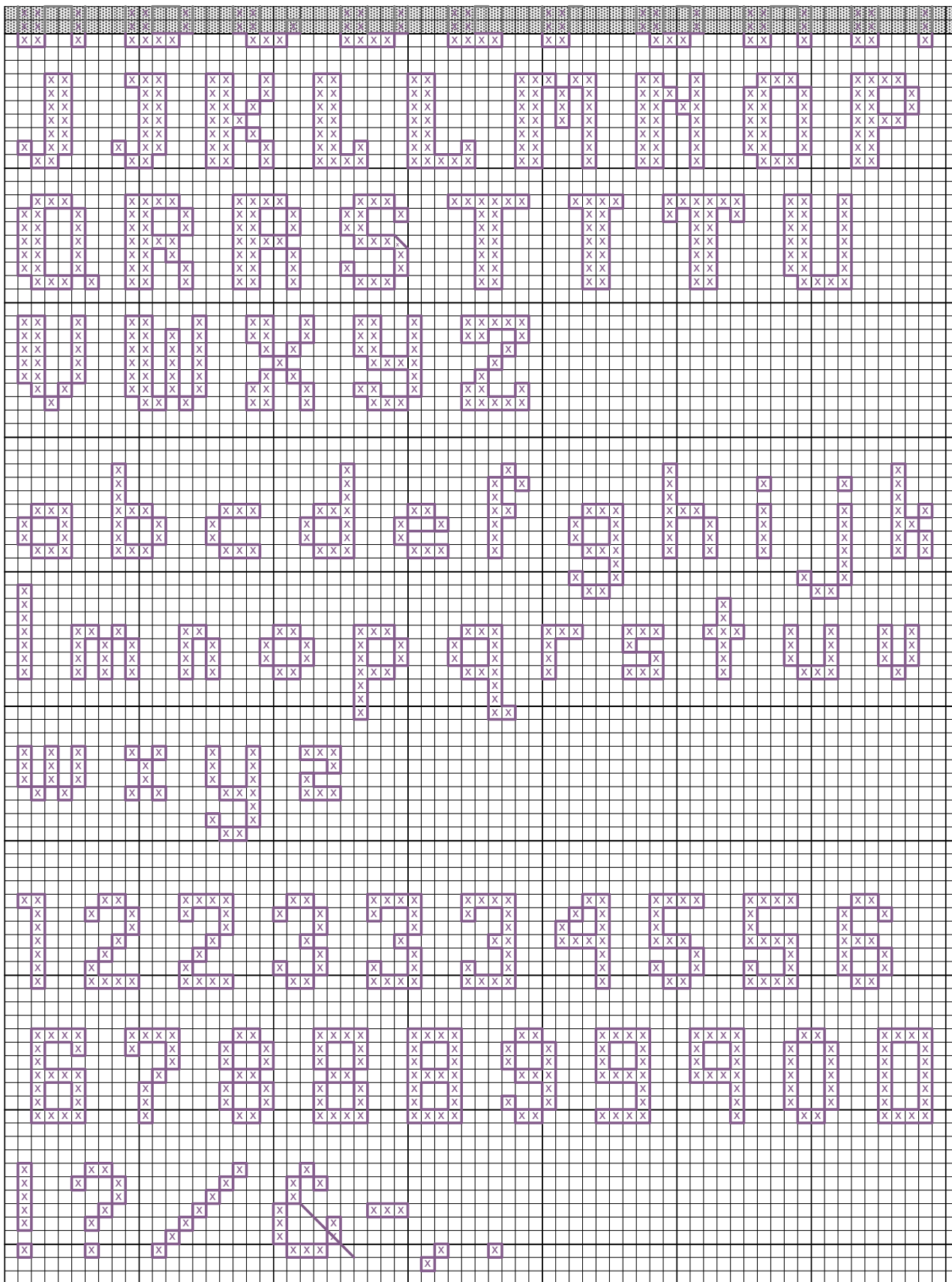


"Alphabet 21 - Basic Block" by Katherine Martin Tripp



"Alphabet 21 - Basic Block" by Katherine Martin Tripp



# Alphabet 21 - Basic Block



**Author:** Katherine Martin Tripp  
**Company:** Extra Mile Mercantile  
**Copyright:** Katherine Martin Tripp  
**Website:** www.better-cross-stitch-patterns.com  
**Grid Size:** 71W x 193H  
**Design Area:** 6.90" x 19.10" (69 x 191 stitches)

## In the Design Example:

Every cross stitcher eventually needs a collection of basic alphabets that can be easily applied to a variety of projects. It is easy to find letters to use when you have lots of space, but when the available area is tight, your task is more difficult.

At only seven stitches high, "**Alphabet 21 - Basic Block**" contains two complete letter sets. The first uses both full and partial cross stitches, while the second uses only full stitches. Both are easy to stitch.

When stitched on 14-count evenweave fabric using DMC floss, use:

- 2 strands for cross stitches
- 1 strand for backstitches

## Description:

Block letters, standard/straight.

## Characters Included:

- Upper Case Letters
- Lower Case Letters
- Numbers
- Punctuation

## Height:

- The upper case letters are 7 stitches high.
- The lower case letters without ascenders or descenders (ex: a, c, o) are 4 stitches high.
- The lower case letters with only ascenders (ex: b, d, h) or only descenders, (ex: g, p, y) are 7 stitches high.
- The lower case "j", with descender and a dot above, is 9 stitches high.

## Width:

These letters have varying widths, but most of the upper and lower case letters are 5 stitches wide.

## Stitch Complexity:

First Letter Set

- Full Cross Stitches
- 1/4 Cross Stitches
- Backstitches

Second Letter Set

- Full Cross Stitches
- Backstitches

Use quarter stitches for the partial stitches on the first letter set, using the backstitch outline to complete the sides. You can learn how to make a quarter stitch by clicking on the "How To..." button on the left menu, then selecting "Quarter Stitch Tutorial" at the bottom of the page. Other unfamiliar stitches can be found the same way.

## Floss:

You can change the floss color to reflect your tastes and to coordinate with your existing cross stitch project. Use the same number of strands that you are using throughout the rest of your pattern.

## How to Fit Text into a Design:

Learn how to select and adapt cross stitch alphabets by clicking on the "Alphabet 123s" button on the left menu.