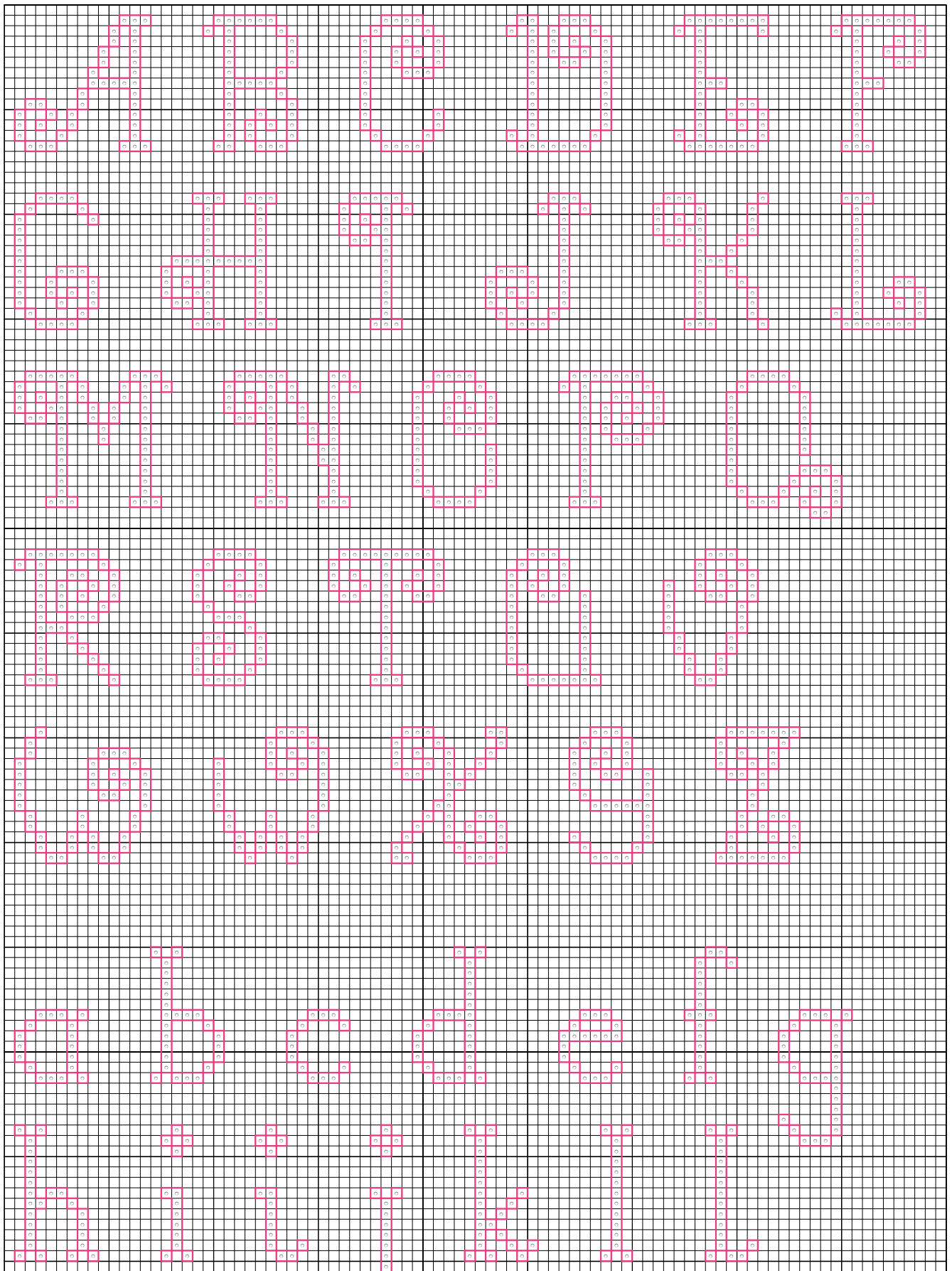


"Alpha 22 - Curly Q's" by Katherine MartinTripp



"Alpha 22 - Curly Q's" by Katherine MartinTripp



Legend:
◻ ■ DMC-3804
Backstitches:
— DMC-3804

Alpha 22 - Curly Q's



Author: Katherine MartinTripp
Company: Extra Mile Mercantile
Copyright: Katherine Martin Tripp
Website: better-cross-stitch-patterns.com
Grid Size: 90W x 222H
Design Area: 6.21" x 15.64" (87 x 219 stitches)

In the Example:

The "**Curly Qs - Alphabet 22**" is a fanciful, decorative letter set, yet it is still very readable. By simply changing the color of the floss, and it becomes a fun way to dress up any holiday project.

When stitched on 14-count fabric using DMC floss, use:

- 2 strands for cross stitches
- 1 strand for backstitches

Description:

Block letters, standard/straight.

Characters Included:

- Upper Case Letters
- Lower Case Letters
- Numbers
- Punctuation

Height:

- The upper case letters are 13 stitches high.
- The lower case letters without ascenders or descenders (ex: a, c, o) are 7 stitches high.
- The lower case letters with only ascenders (ex: b, d, h) or only descenders, (ex: g, p, y) are 13 stitches high.
- The lower case "j", with descender and a dot above, is 19 stitches high.

Width:

These letters have varying widths. Most of the upper case letters range from the 8 to 11 stitches, with M maxing out at 15. The majority of lower case letters are 5 to 7 stitches wide.

Stitch Complexity:

- Full Cross Stitches
- Backstitches

This is an easy to stitch alphabet that uses only full cross stitches, outlined with backstitches. If these stitches are unfamiliar to you, click on the "How To..." button on the left menu, then select tutorial links at the bottom of the page.

Floss:

It is assumed that you will change the floss color to reflect your tastes and to coordinate with the rest of your project. Use the same number of strands that you are using throughout the rest of your cross stitch pattern.

How to Fit Text into a Design:

Learn how to select and adapt cross stitch alphabets by clicking on the "Alphabet 123s" button on the left menu.