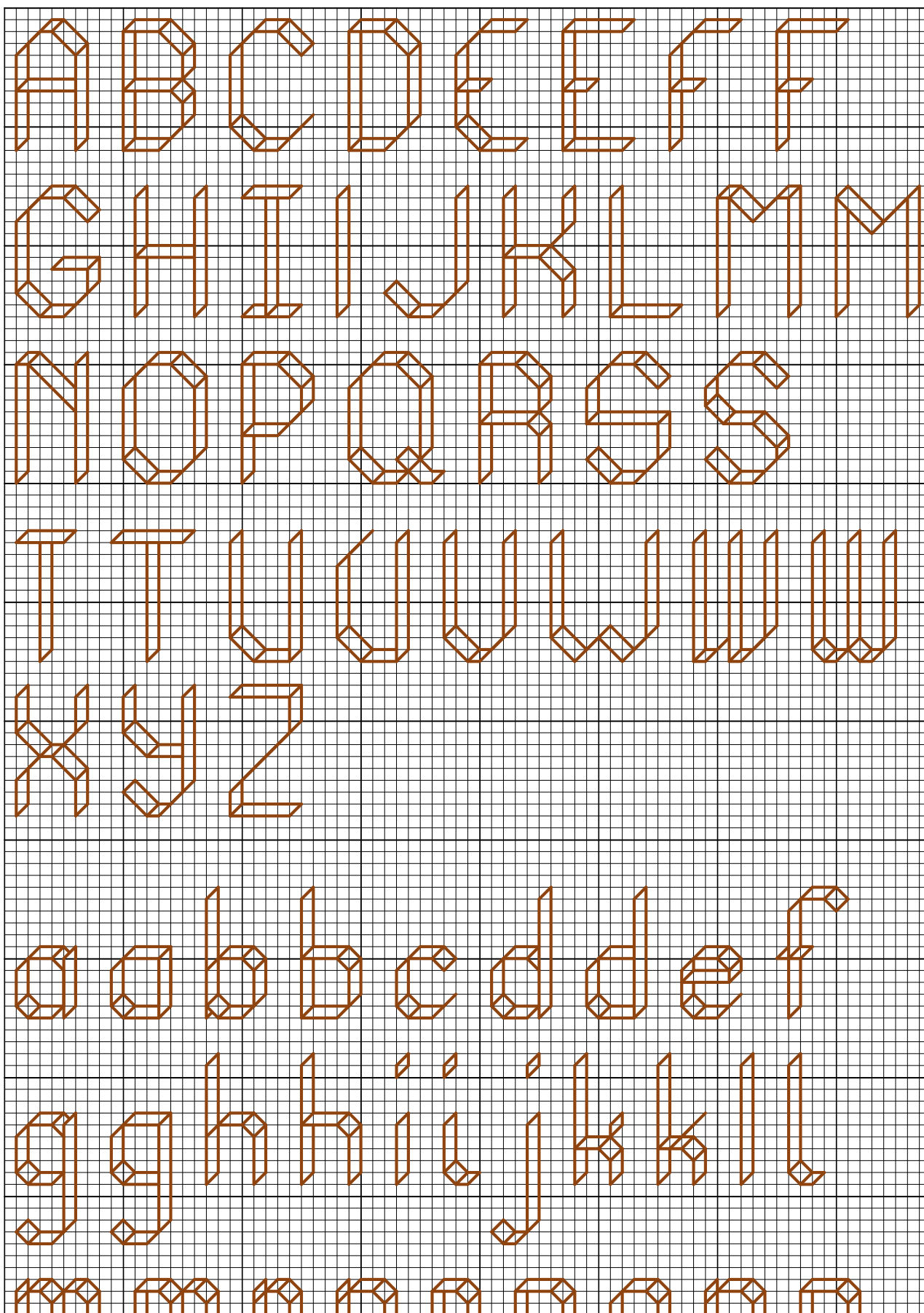


"Alphabet 23 - Box Kite" by Katherine MartinTripp





# Alphabet 23 - Box Kite



---

<b>Author:</b>	Katherine MartinTripp
<b>Company:</b>	Extra Mile Mercantile
<b>Copyright:</b>	Katherine Martin Tripp
<b>Website:</b>	better-cross-stitch-patterns.com
<b>Grid Size:</b>	78W x 210H
<b>Design Area:</b>	5.43" x 14.86" (76 x 208 stitches)

## In the Example:

The characters in "**Box Kite - Alphabet 23**" have the added appearance of depth. And though it is created using only backstitches, it has more weight than your typical line alphabet.

There is more than one option for several letters particularly with the lower case set. Look at the a's, b's, c's, for example. One letter is designed with a more rounded appearance, while the other has fewer angles. Whichever you prefer, I suggest that you be consistent and use the same style throughout your text.

When stitched on 14-count fabric using DMC floss, use one strand for the backstitches. If you use too many strands, you'll fill in the openings on the smaller angles.

## Description:

Line letters, standard/straight.

## Characters Included:

- Upper Case Letters
- Lower Case Letters
- Numbers
- Punctuation

## Height:

- The upper case letters are 11 stitches high.
- The lower case letters without ascenders or descenders (ex: a, c, o) are 6 stitches high.
- The lower case letters with only ascenders (ex: b, d, h) or only descenders, (ex: g, p, y) are 11 stitches high.
- The lower case "j", with descender and a dot above, is 16 stitches high.

## Width:

These letters have varying widths. Most of the upper case letters are 6 or 7 stitches wide. The majority of lower case letters are 5 stitches wide.

## Stitch Complexity:

- Backstitches

This is an easy to stitch alphabet that uses only backstitches. Learn this stitch by selecting "Backstitch" under the Tutorials section on the left menu.

## Floss:

It is assumed that you will change the floss color to reflect your tastes and to coordinate with the rest of your project. Use the same number of strands that you are using throughout the rest of your cross stitch pattern.

## How to Fit Text into a Design:

Learn how to select and adapt cross stitch alphabets by clicking on "Alphabet 123s" under the "Free Alphabets" section on the left menu.