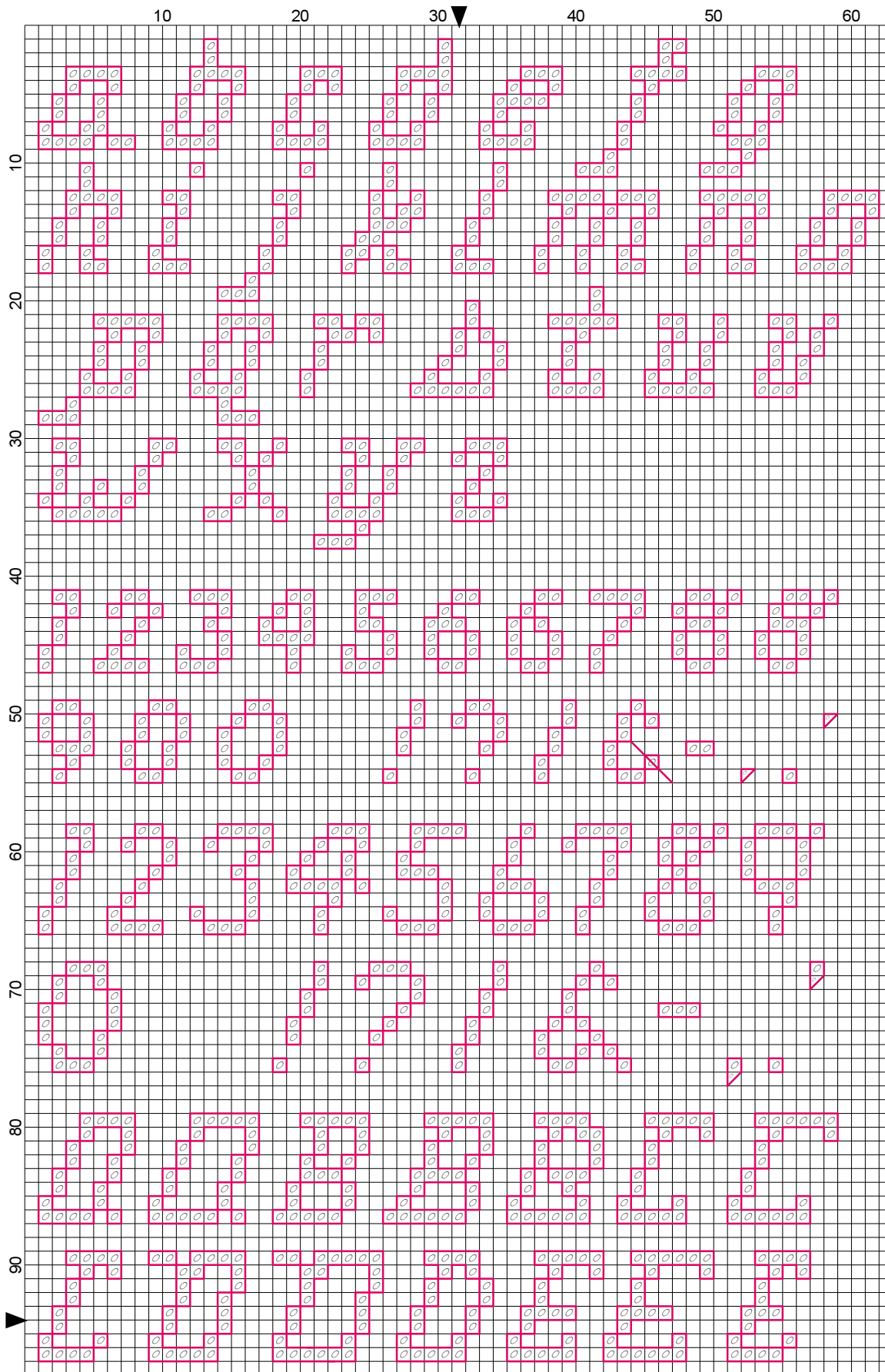
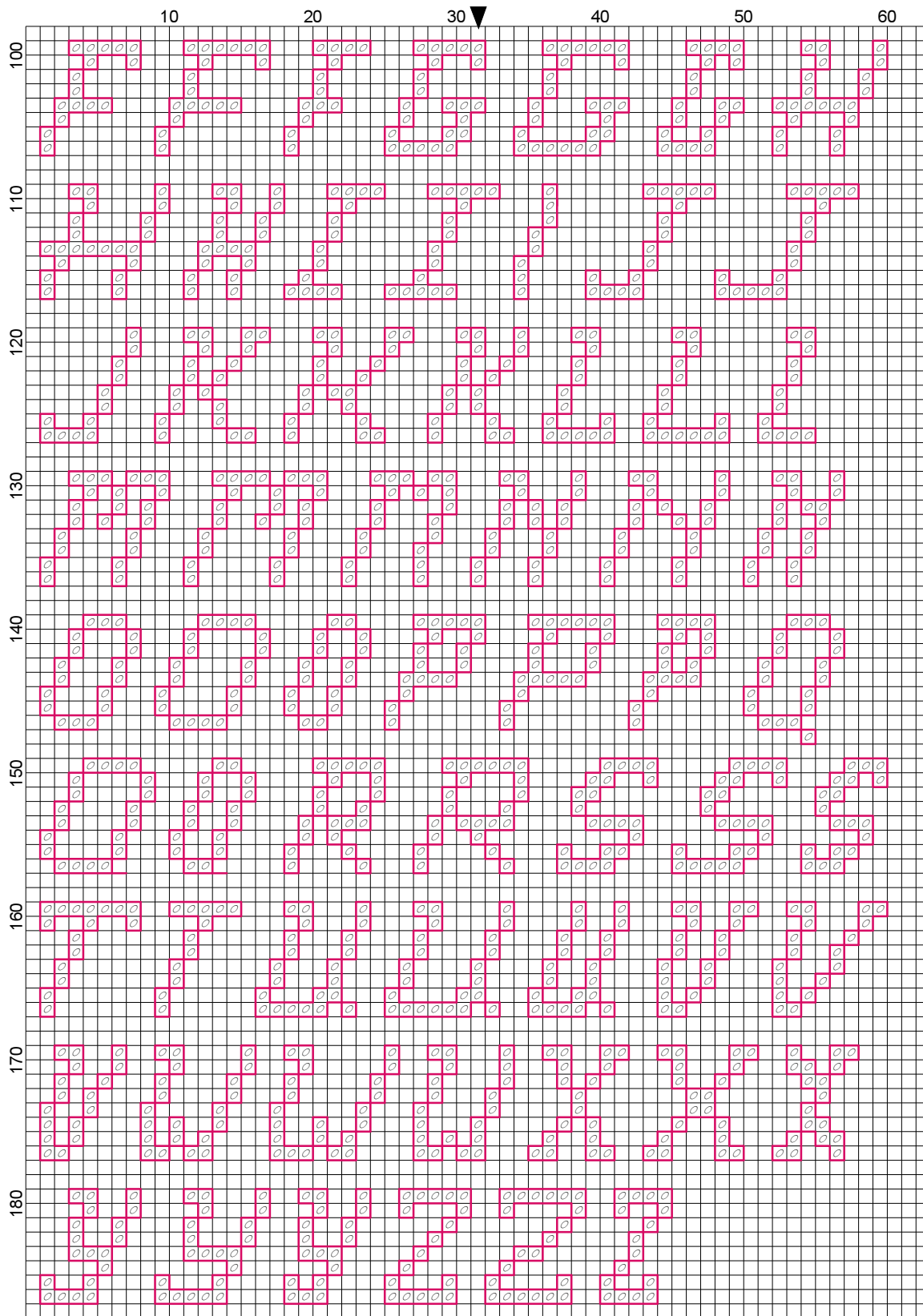


"Alphabet 07" by Katherine MartinTripp



"Alphabet 07" by Katherine MartinTripp



Alphabet 07



Author: Katherine Martin Tripp
Company: Extra Mile Mercantile
Copyright: Katherine Martin Tripp
Website: better-cross-stitch-patterns.com
Fabric: Evenweave
Grid Size: 63W x 188H
Design Area: 3.39" x 10.33" (61 x 186 stitches)

In the Photograph:

The "Alphabet 07" is stitched on 18-count Aida over one thread. I used DMC floss:

- 2 strands for cross stitches and partial stitches
- 1 strands for backstitches

Description: Block letters, script/italics

Characters Included:

- Upper Case Letters (normal, wide and narrow widths provided for most)
- Lower Case Letters
- Numbers
- Punctuation

Height:

- The upper case letters are 8 stitches high.
- The lower case letters without ascenders or descenders (ex: a, c, o) are 6 stitches high.
- The lower case letters with only ascenders (ex: b, d, h) or only descenders (ex: g, p, y) are 8 stitches high.
- The tip of the lower case "s" makes it 7 stitches high. You can eliminate the topmost cross stitch if you prefer.
- The lower case "f", with a descender and ascender, is 10 stitches from tip to tip.

Width:

These letters have varying widths. When possible, normal, wide and narrow versions of uppercase letters are provided. These should help you squeeze text into shorter lines or expand into longer ones.

Stitch Complexity:

- Full cross stitches
- 1/4 and/or 3/4 cross stitches for punctuation only
- Backstitches

For the partial stitches that make up the angles, you can use either 1/4 cross stitches, letting the backstitch outline complete it; or, use 3/4 cross stitches with the outline for a fuller look. The fabric and the floss strand count will affect your choice for each project. If you are uncertain, try stitching a few sample letters in the corner of your fabric.

Learn any unfamiliar stitches by clicking on the "How To..." button on the left menu of the Home page.

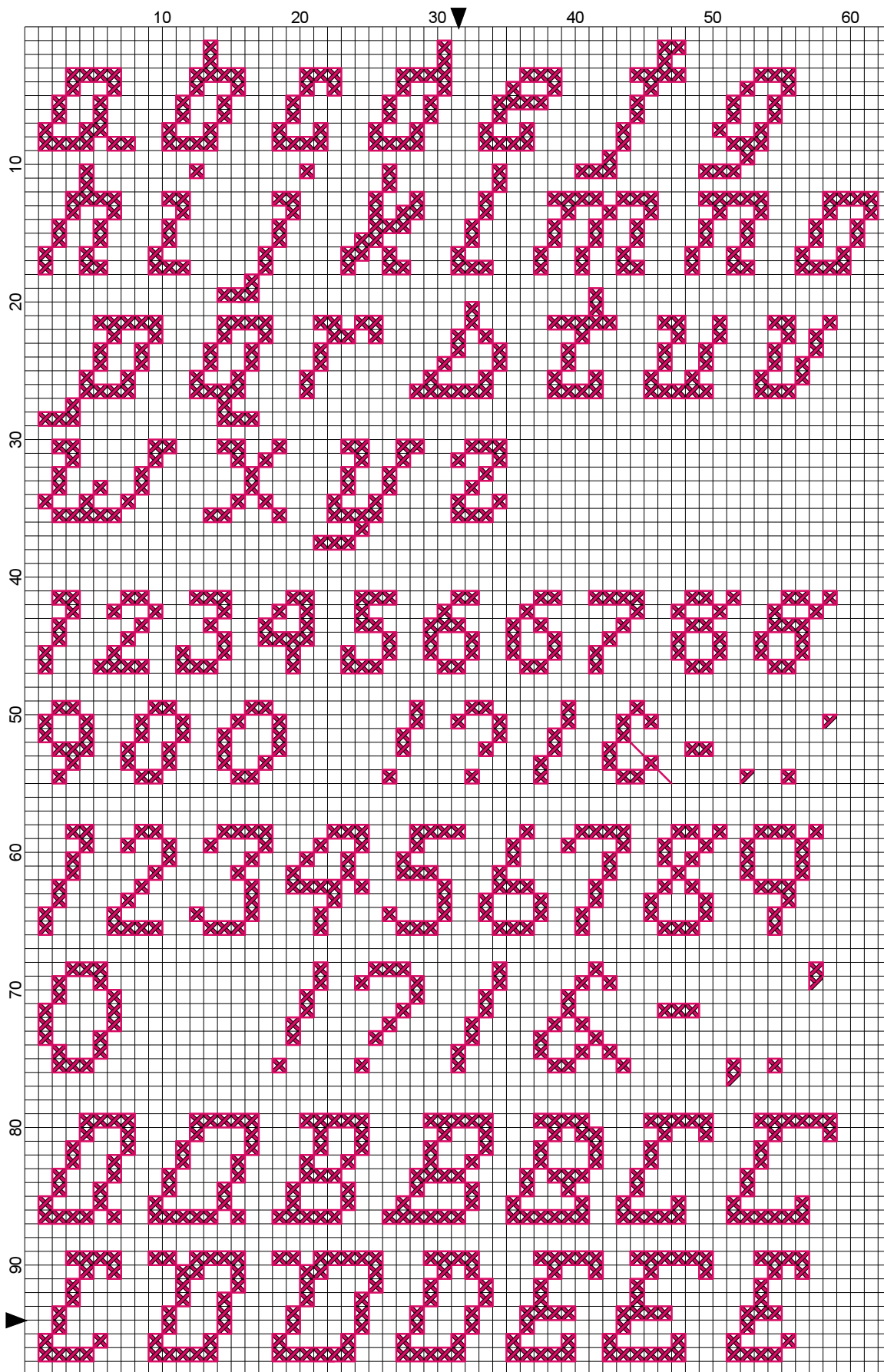
Floss:

It is assumed that you will change the floss color to reflect your tastes and to coordinate with the rest of your project. Use the same number of strands that you are using throughout the rest of your cross stitch pattern.

How to Fit Text into a Design:

To learn how to select and adapt cross stitch alphabets, click on the "Alphabets" button on the left menu of the Home page. Thoroughly read "The 123's of the Counted Cross Stitch Alphabet" to learn how to select and adapt cross stitch alphabets.

"Alphabet 07" by Katherine MartinTripp



"Alphabet 07" by Katherine MartinTripp

