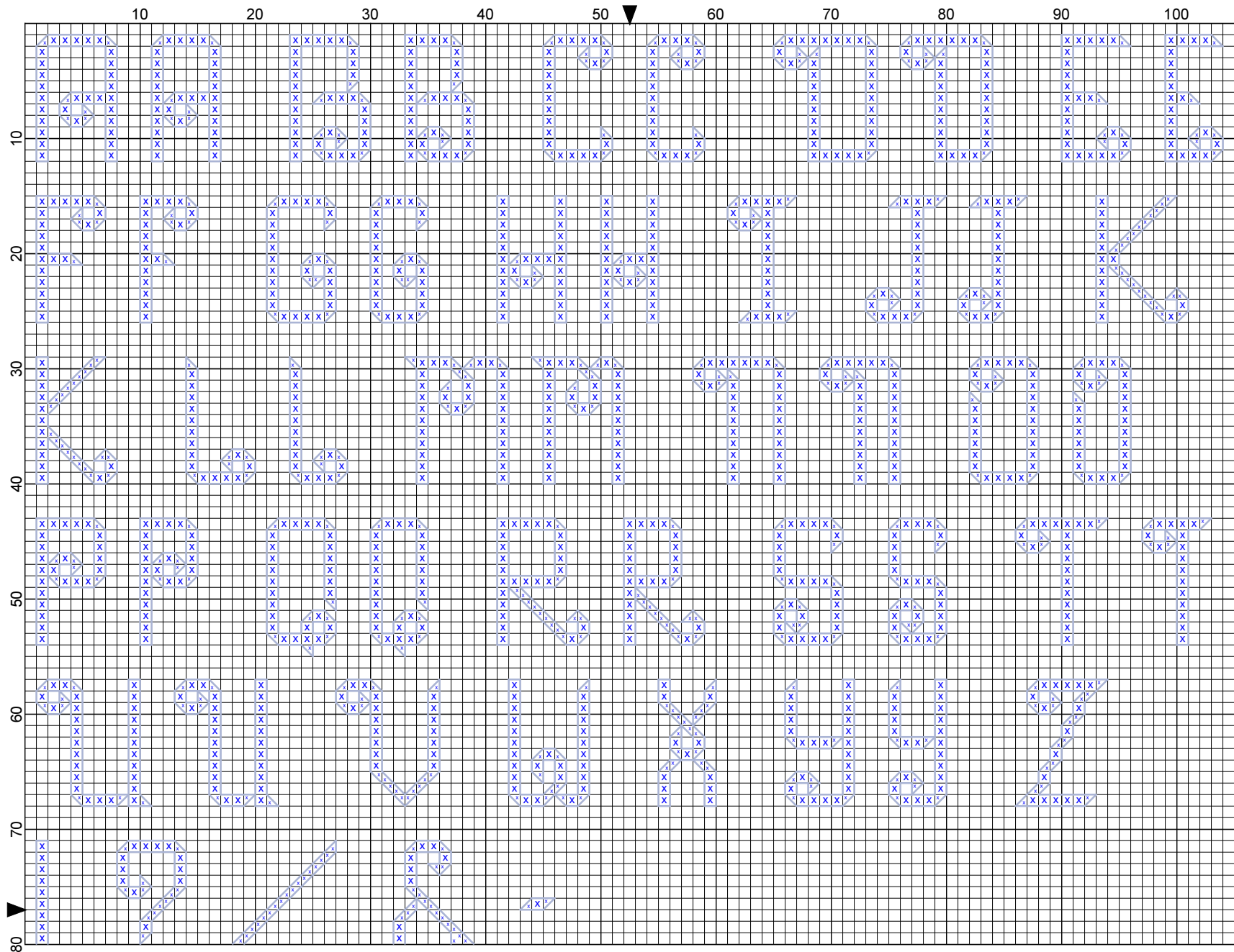
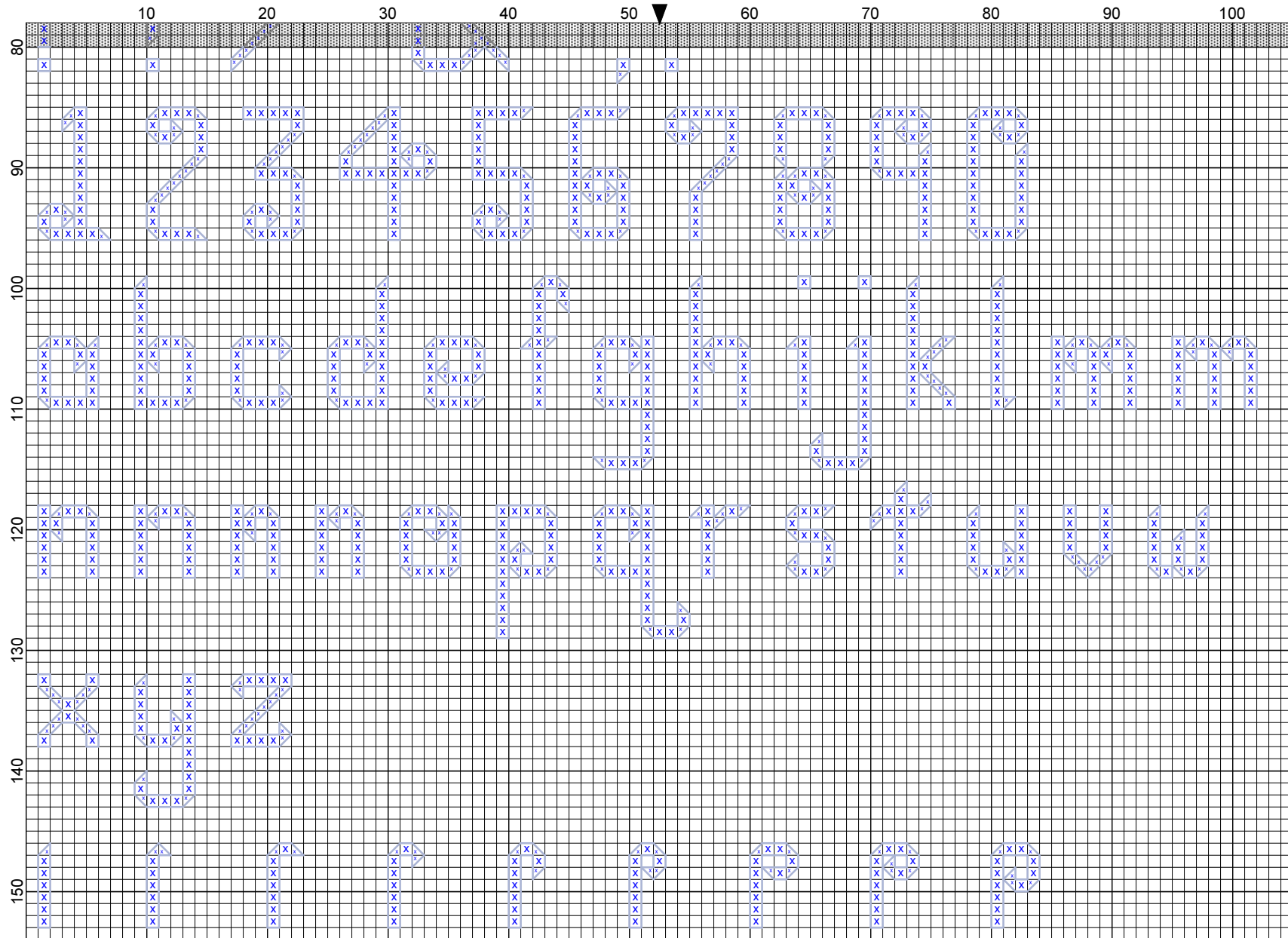


"Alphabet 10 - Ribbon" by Katherine Martin Tripp



"Alphabet 10 - Ribbon" by Katherine Martin Tripp



Alphabet 10 - Ribbon



Author: Katherine Martin Tripp
Company: Extra Mile Mercantile
Copyright: Katherine Martin Tripp
Website: www.better-cross-stitch-patterns.com
Fabric: Evenweave
Grid Size: 105W x 154H
Design Area: 7.36" x 10.86" (103 x 152 stitches)

In the Photograph:

The "Alphabet 10" is stitched on 14-count Aida using DMC floss.

- 2 strands for cross stitches and partial stitches
- 1 strand for backstitches

Description: Block Letters, standard/straight

Characters Included:

- Upper Case Letters
- Lower Case Letters
- Numbers
- Punctuation

Height:

- The upper case letters are 11 stitches high.
- The lower case letters without ascenders or descenders (ex: a, c, o) are 6 stitches high.
- The lower case letters with only ascenders (ex: b, d, h) or only descenders (ex: g, p, y) are 11 stitches high.

Width:

These letters have varying widths. I have provided a standard and a narrow style width for most upper case letters.

The majority of lower case letters are 5 stitches wide. If you need squeeze them, look at the examples for an "n". As shown, you can reduce the widths for many by removing one stitch in the center.

Stitch Complexity:

Full cross stitches

3/4 cross stitches or 1/4 cross stitches

Backstitches

For the partial stitches that make up the angles, you can use 1/4 cross stitches, letting the backtitch outline complete them. Or, use 3/4 cross stitches, with or without the outline for a fuller, rounder look. The fabric and floss strand count may affect your choice. If you are uncertain, try stitching a few sample letters in the corner of your fabric.

The bottom row on this chart demonstrates how you can alter the "curl" on the letters, ranging from a simple, single, angled end to a complete circle. You can also change the "length" of the angled end, as shown in the lower case "m" and "n" examples.

Learn any unfamiliar stitches by clicking on the "How To..." button on the left menu or the Better Cross Stitch Patterns Home page.

Floss:

It is assumed that you will change the floss color to reflect your tastes and to coordinate with the rest of your project. Use the same number of strands that you are already using throughout the rest of your cross stitch pattern.

How to Fit Text into a Design:

To learn how to select and adapt cross stitch alphabets, read "The 123/s of the Counted Cross Stitch Alphabet."