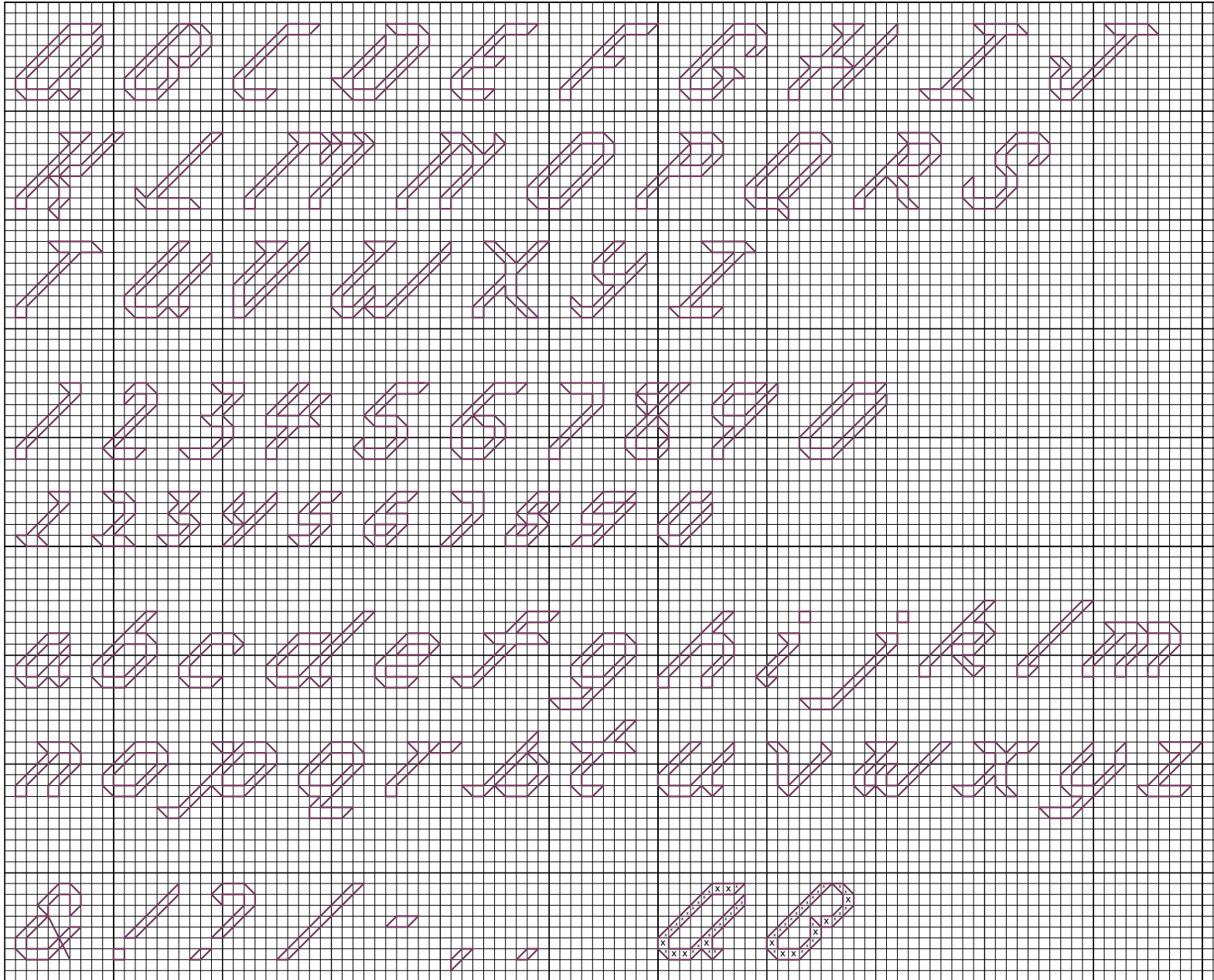


"Alphabet 11 - Outline" by Katherine Martin Tripp

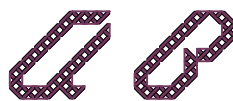


A B C D E F G H I J
K L M N O P Q R S
T U V W X Y Z

1 2 3 4 5 6 7 8 9 0
1 2 3 4 5 6 7 8 9 0

a b c d e f g h i j k l m
n o p q r t u v w x y z

& ! ? / - , .



Alphabet 11 - Outline



Author: Katherine Martin Tripp
Company: Extra Mile Mercantile
Copyright: Katherine Martin Tripp
Website: www.better-cross-stitch-patterns.com
Fabric: Evenweave
Grid Size: 112W x 90H
Design Area: 7.79" x 6.21" (109 x 87 stitches)

Legend:

■ [2] DMC 3834 grape - dk

Backstitch Lines:

— DMC-3834 grape - dk

In the Photograph:

The "Alphabet 11", as shown in the photograph, is stitched on 14-count Aida using DMC floss. It was originally designed to be stitched in outline, using backstitches alone. However, it can also be filled in with cross stitches. You can see an example in the letters "A" and "B" stitched at the bottom of the chart..

Outline only:

- 1 strand for backstitches

Filled in:

- 2 strands for cross stitches and partial stitches
- 1 strand for backstitches

Description: Outline Letters, script/italics

Characters Included:

- Upper Case Letters
- Lower Case Letters
- Numbers
- Punctuation

Height:

- The upper case letters are 7 stitches high.
- The lower case letters without ascenders or descenders (ex: a, c, o) are 5 stitches high.
- The lower case "j", including the descender and the dot above it is 9 stitches high.

Width:

- The majority of the upper case letters are 8 stitches wide.
- The majority of lower case letters are 6 and 7 stitches wide.

Stitch Complexity:

For outline only:

- Backstitches alone complete the outline form of these letters.

For solid letters:

- Full cross stitches
- 3/4 cross stitches or 1/4 cross stitches
- Backstitches

Because they are thin and slanted, the majority of stitches used to fill in these letters will be partial stitches. You can choose whether to use 1/4 cross stitches or 3/4 cross stitches. For a 1/4 cross stitch, the backstitch outline completes the diagonal side, and will result in thinner, more angular letters. The 3/4 cross stitch includes the diagonal side, and your letters will look fuller and rounder. The fabric and floss strand count may affect your choice. If you are uncertain, try stitching a few sample letters in the corner of your fabric.

Learn any unfamiliar stitches by clicking on the "How To..." button on the left menu or the Better Cross Stitch Patterns Home page.

Floss:

It is assumed that you will change the floss color to reflect your tastes and to coordinate with the rest of your project. Use the same number of strands that you are already using throughout the rest of your cross stitch pattern.

How to Fit Text into a Design:

These letters are thin and slanted, making it easy to "nest" them. If space is at a premium, you can easily place them with merely a stitch in between. There are other tips and tricks to selecting and adapting cross stitch alphabets. Just click on "Alphabet 123's." on the buttons to the left.