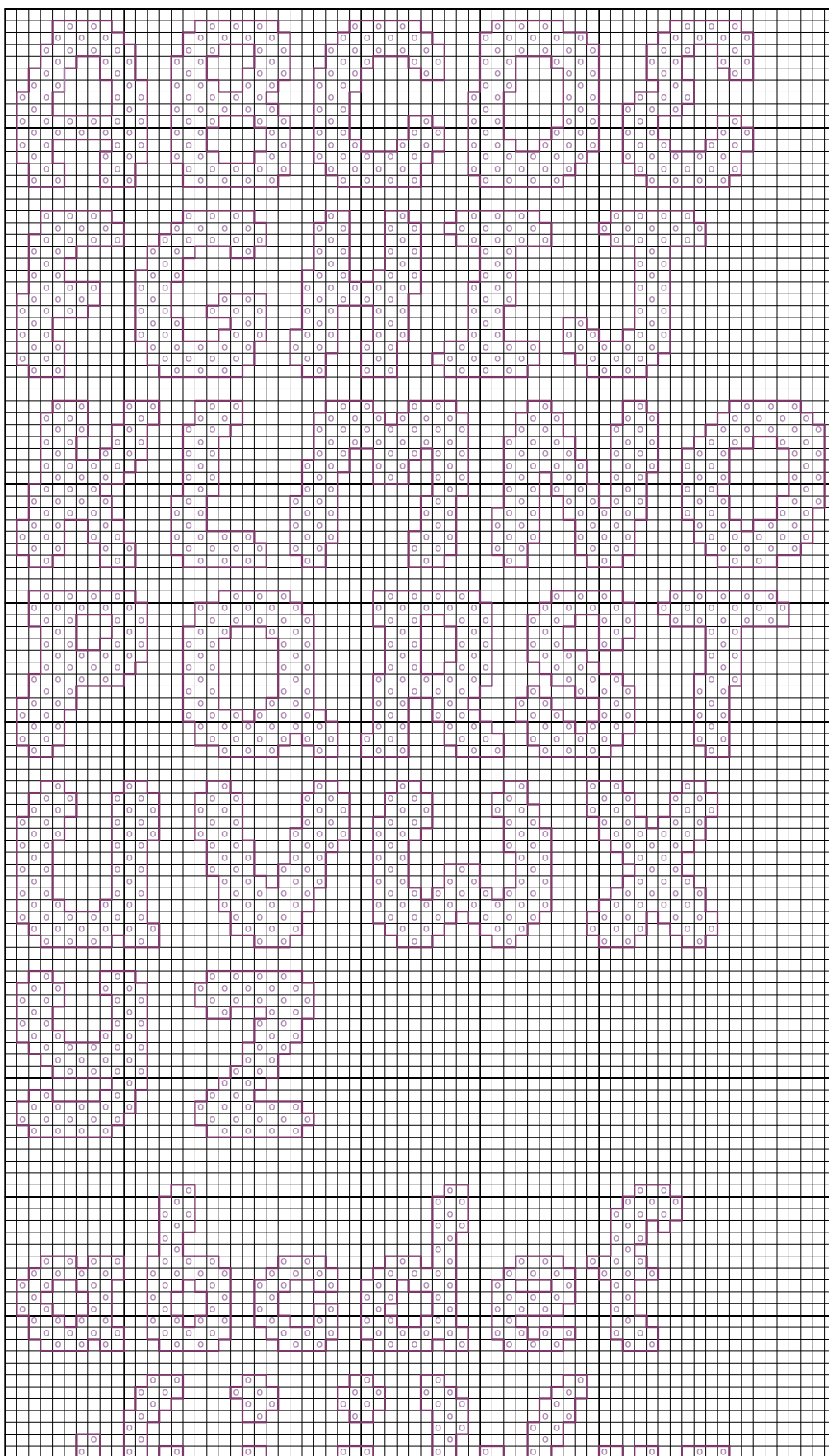







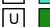





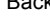


"Cotton Candy Alphabet 19" by Katherine MartinTripp



Legend:

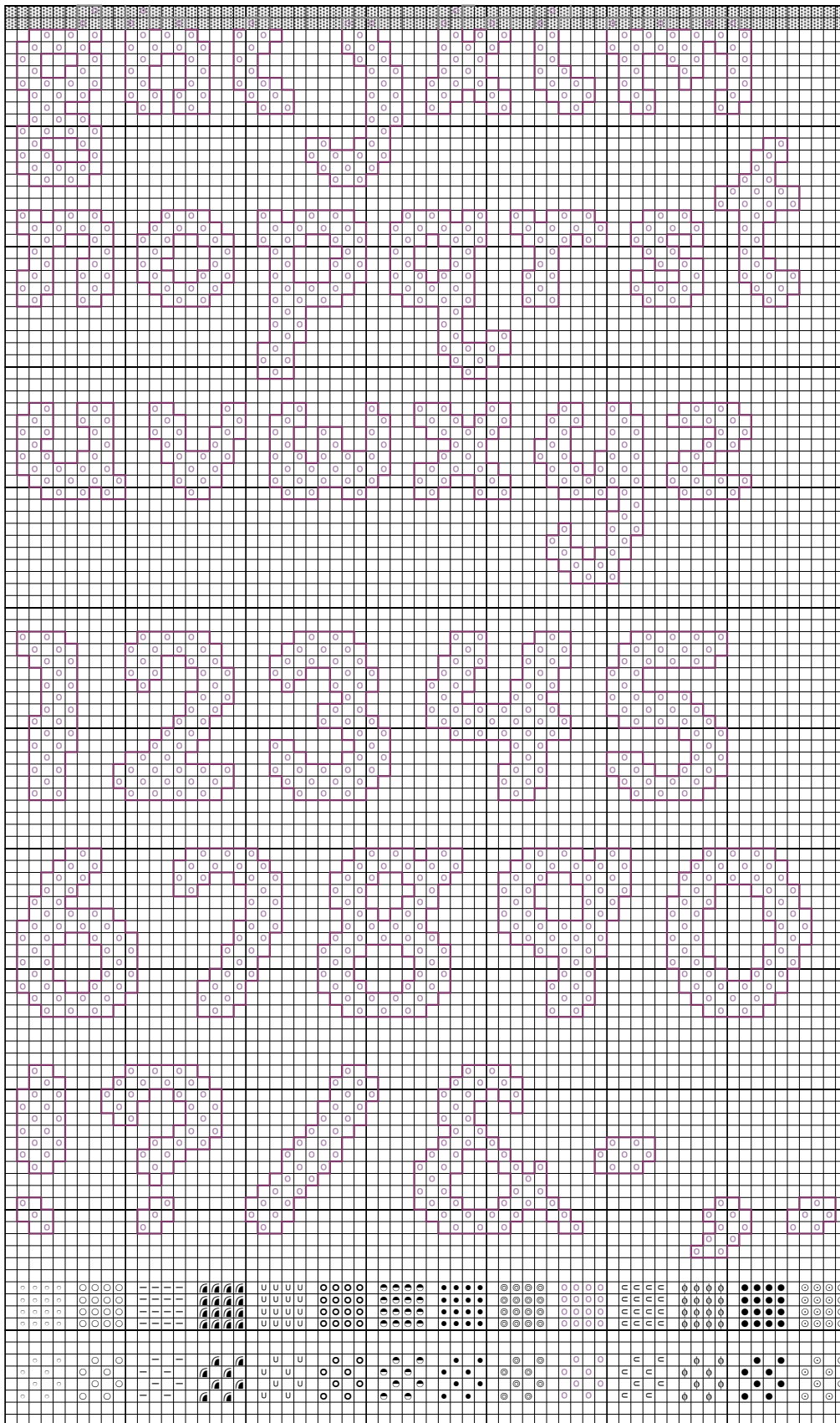
-  DMC-3801
-  DMC-3805
-  DMC-3607
-  DMC-209
-  DMC-553
-  DMC-798
-  DMC-996
-  DMC-3846
-  DMC-701
-  DMC-906
-  DMC-307
-  DMC-740
-  DMC-606
-  DMC-301

Backstitches:

-  DMC-209
-  DMC-552

Katherine Martin Tripp

"Cotton Candy Alphabet 19" by Katherine MartinTripp



Katherine Martin Tripp

Cotton Candy Alphabet 19



Author: Katherine MartinTripp
Company: Extra Mile Mercantile
Copyright: Katherine Martin Tripp
Website: better-cross-stitch-patterns.com
Fabric: Evenweave
Grid Size: 70W x 238H
Design Area: 4.93" x 16.79" (69 x 235 stitches)

Legend:

	DMC 3801	christmas red - lt		DMC 798	delft blue - dk		DMC 307	lemon
	DMC 3805	cyclamen pink		DMC 996	electric blue - md		DMC 740	tangerine
	DMC 3607	plum - lt		DMC 3846	bright turquoise - lt		DMC 606	burnt orange-red
	DMC 209	lavender - dk		DMC 701	christmas green - lt		DMC 301	mahogany - md
	DMC 553	violet		DMC 906	parrot green - md			

Backstitch Lines:

DMC-209 lavender - dk

DMC-552 violet - md

In the Design Example:

"Cotton Candy Alphabet 19" is the second letter set inspired by my design "Addicted to Cross Stitch - It's my bear to cross". This casual, fun alphabet can be stitched in a checkered pattern using a single color, or it can be filled in completely. For even more personality, stitch each letter in a different color. Line up the bottoms of the letters, or stagger them. However you use them, this is a quick and easy alphabet, using only full cross stitches and backstitches.

When stitched on 14-count evenweave fabric using DMC floss, use:

- 2 strands for cross stitches
- 1 strand for backstitches

Description:

Block letters, standard/straight.

Characters Included:

- Upper Case Letters
- Lower Case Letters
- Numbers
- Punctuation

Height:

- The upper case letters are 14 stitches high.
- The lower case letters without ascenders or descenders (ex: a, c, o) are 8 stitches high.
- The lower case letters with only ascenders (ex: b, d, h) or only descenders, (ex: g, p, y) are 14 stitches high.
- The lower case "j", with descender and a dot above, is 20 stitches high.

Width:

These letters have varying widths.

Stitch Complexity:

- Full Cross Stitches
- Backstitches

If you stitch these letters in a checkered design, you can either backstitch only the exterior outline of the letter (as shown in this pattern) or you can backstitch each individual interior block or square. I suggest you try both to determine the look you prefer.

Learn any unfamiliar stitches by clicking on the "How To..." button on the left menu, then select tutorial links at the bottom of the page.

Floss:

You can change the floss color to reflect your tastes and to coordinate with your existing cross stitch project. Use the same number of strands that you are using throughout the rest of your pattern.

If you like the colors that I used for the stitched words "Cross Stitch Alphabet 19," I have included small squares at the bottom of this chart. These show those same floss colors, and the order in which I used them.

How to Fit Text into a Design:

Learn how to select and adapt cross stitch alphabets by clicking on the "Alphabet 123s" button on the left menu.