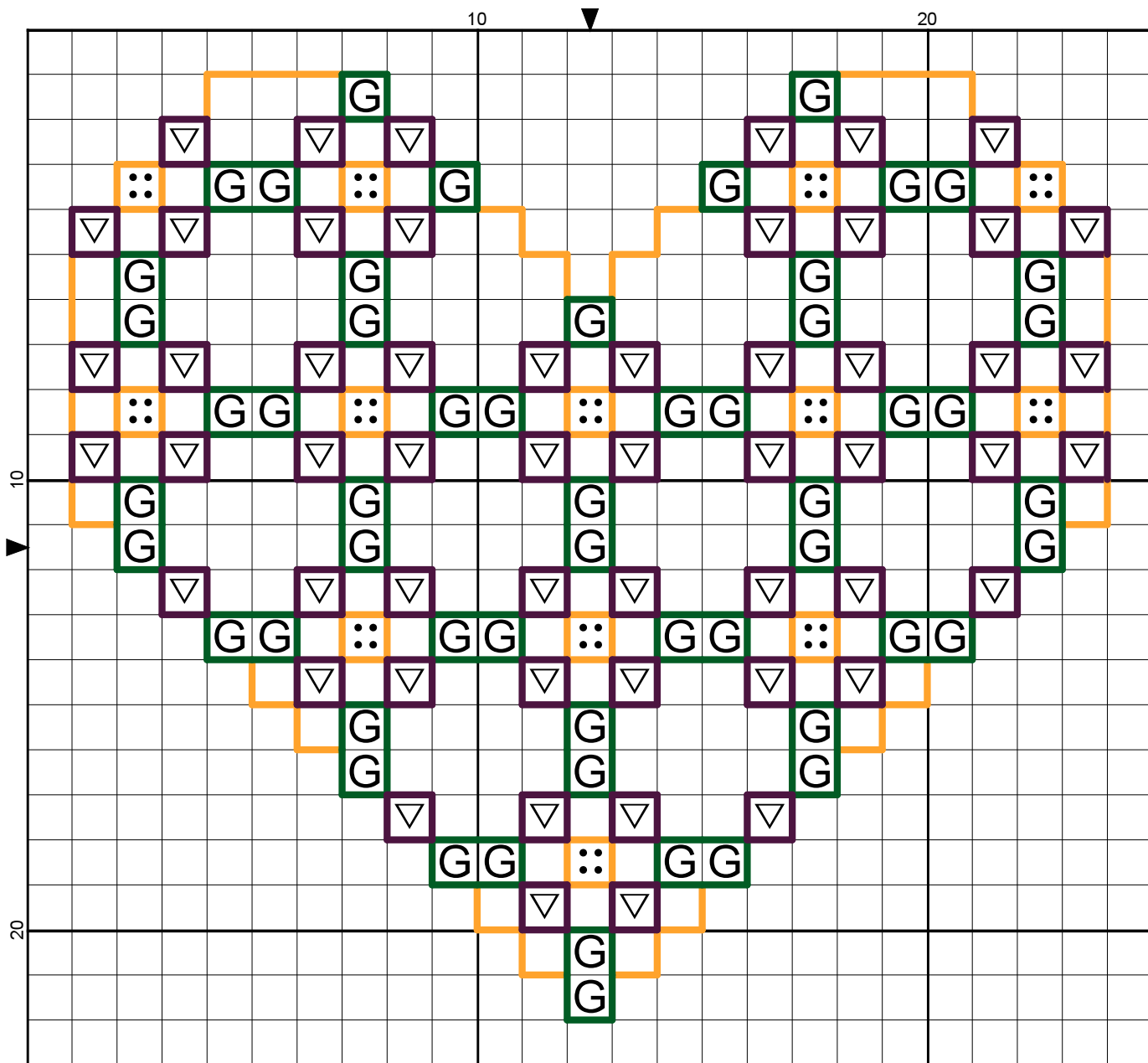


"Heart - Violets" by Katherine Martin Tripp



Katherine Martin Tripp

Legend:

▽ DMC-550 violet - vy dk

Backstitches:

— DMC-550 violet - vy dk

■ DMC-699 christmas green

— DMC-699 christmas green

■ DMC-741 tangerine - md


— DMC-741 tangerine - md

Heart - Violets






Author: Katherine Martin Tripp
Company: Extra Mile Mercantile
Copyright: Katherine Martin Tripp
Website: www.better-cross-stitch-patterns.com
Fabric: Evenweave
Grid Size: 25W x 23H
Design Area: 2.56" x 2.33" (23 x 21 stitches)

Legend:

 [3] DMC-550 ANC-101 violet - vy dk  [3] DMC-741 ANC-304 tangerine - md
 [3] DMC-699 ANC-923 christmas green

Backstitch Lines:

 DMC-550 violet - vy dk  DMC-699 christmas green  DMC-741 tangerine - md

In the Photograph:

I embroidered "Heart - Violets" on 18-count Aida stitched over two threads. I used DMC floss: 3 strands for cross stitches, 2 strands for backstitches.

Stitch Complexity:

Full cross stitches, backstitches.

How to Cross Stitch this Design:

If you already know how to cross stitch, the Quick Start checklist below will get you on your way. Just learning? Simply return to "Home" and click on the "Getting Started" button on the left. There, you will find links to detailed instructions and diagrams.

Quick Start

Step 1 - Review this Chart

Eliminate surprises by reading these instructions and reviewing the chart thoroughly before you begin stitching. Identify and learn any unfamiliar stitches listed in "Stitch Complexity" above.

Step 2 - Select and Prepare Your Fabric

To stitch the design exactly as it is shown in the photograph, simply use the materials as described. If you have a favorite fabric type and thread count, or if you have a specific size in mind for the finished piece, translate inches to thread count to determine your initial fabric size. Next, decide how you'll display the finished design and add enough inches to the length and width before cutting it. Be generous.

Treat the outside edges of your fabric to prevent fraying. Find and mark the center. Baste in gridlines to match the gridlines on the pattern (basting the gridlines is optional on these small heart patterns).

Step 3 - Select and Prepare Your Floss

Use the colors listed above or substitute ones of your own. If using fabric with a different thread count, you may need to adjust the number of strands of floss you'll use. Still uncertain? Work a few sample stitches in the corner of your fabric.

If you are stitching this design on something that will be worn or washed, it may be necessary to launder the floss before stitching.

As you use each color, cut the floss into strips of 15" to 18". For fuller and thicker stitches, separate all six strands and then recombine them into the number of strands you will ultimately use.

Step 4 - Stitch the Design

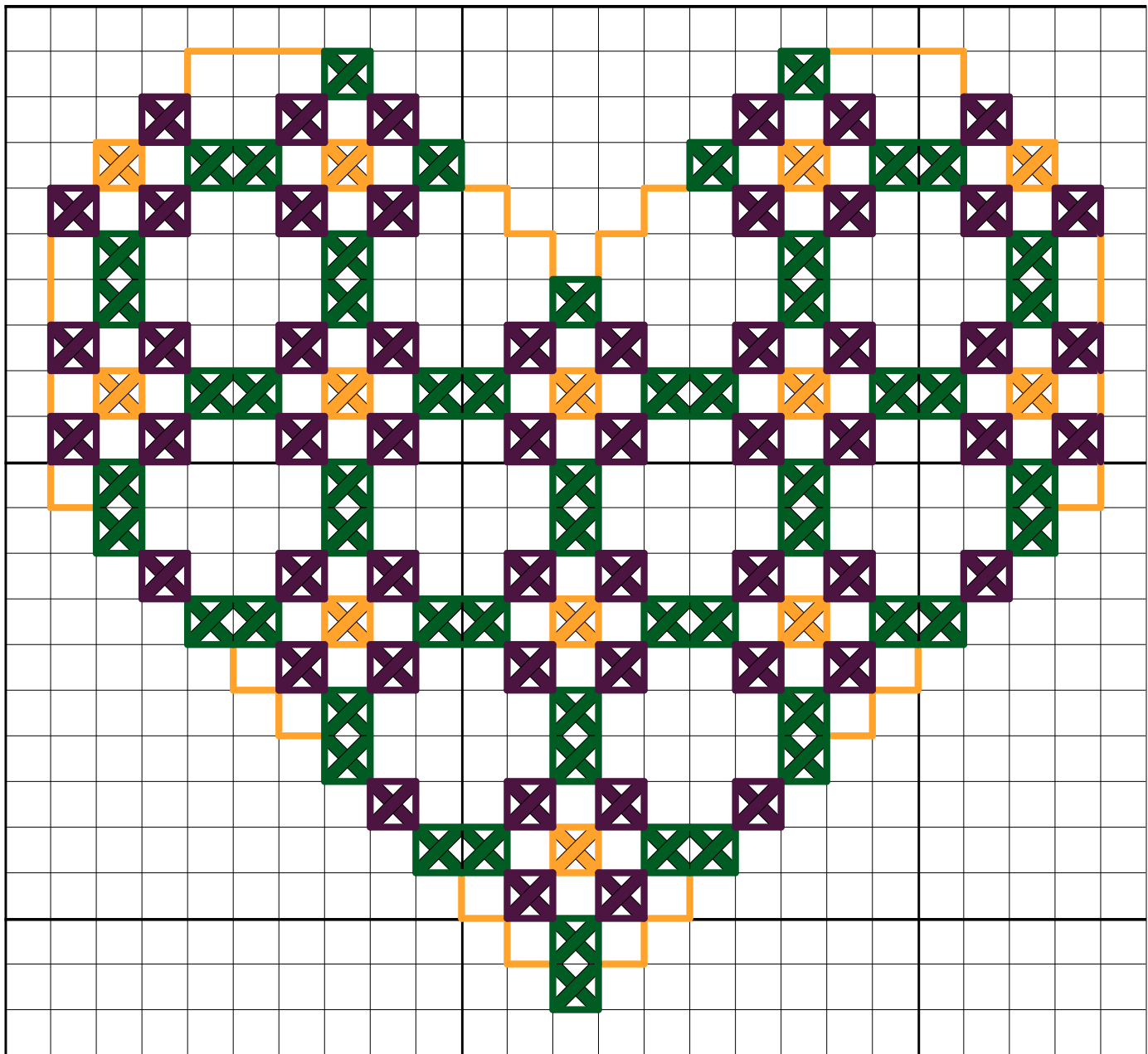
Each square containing a symbol represents one cross stitch; the legend indicates which color to use. Squares containing more than one symbol are stitched with a combination of a 1/4 cross stitch and a 3/4 cross stitch. Likewise, squares with only a single, smaller symbol tucked into one corner represents either a 1/4 cross stitch or a 3/4 cross stitch alone. If there is a French knot on top of a cross stitch, the symbol representing it may obscure the symbol for the underlying cross stitch. Use common sense and refer to the photograph for clarification. This particular chart uses only full cross stitches and backstitches.

From the center of your fabric, count down to the bottom-most point of the heart and place your first green stitch there. As you move up vertically, cross stitch two green squares, skip three, stitch two, skip three, until your first green row is complete. Repeat the same pattern for all vertical, then all horizontal, rows. Cross stitch your yellow centers, and finish with the purple "petals."

If you are working over two threads, on fabric such as linen, the placement of the first stitch is critical. To prevent puckering and provide stability, the first diagonal of the first cross stitch must start and end where a vertical fabric thread crosses over a horizontal thread.

Outline the green "leaves" with backstitches, followed by the yellow centers and purple petals. Where there are gaps in between, be sure to define the outermost edges of the large heart with yellow backstitches.

"Heart - Violets" by Katherine Martin Tripp



Katherine Martin Tripp

Legend:

■ DMC-550 ■ DMC-699 ■ DMC-741

Backstitches:

— DMC-550 — DMC-699 — DMC-741