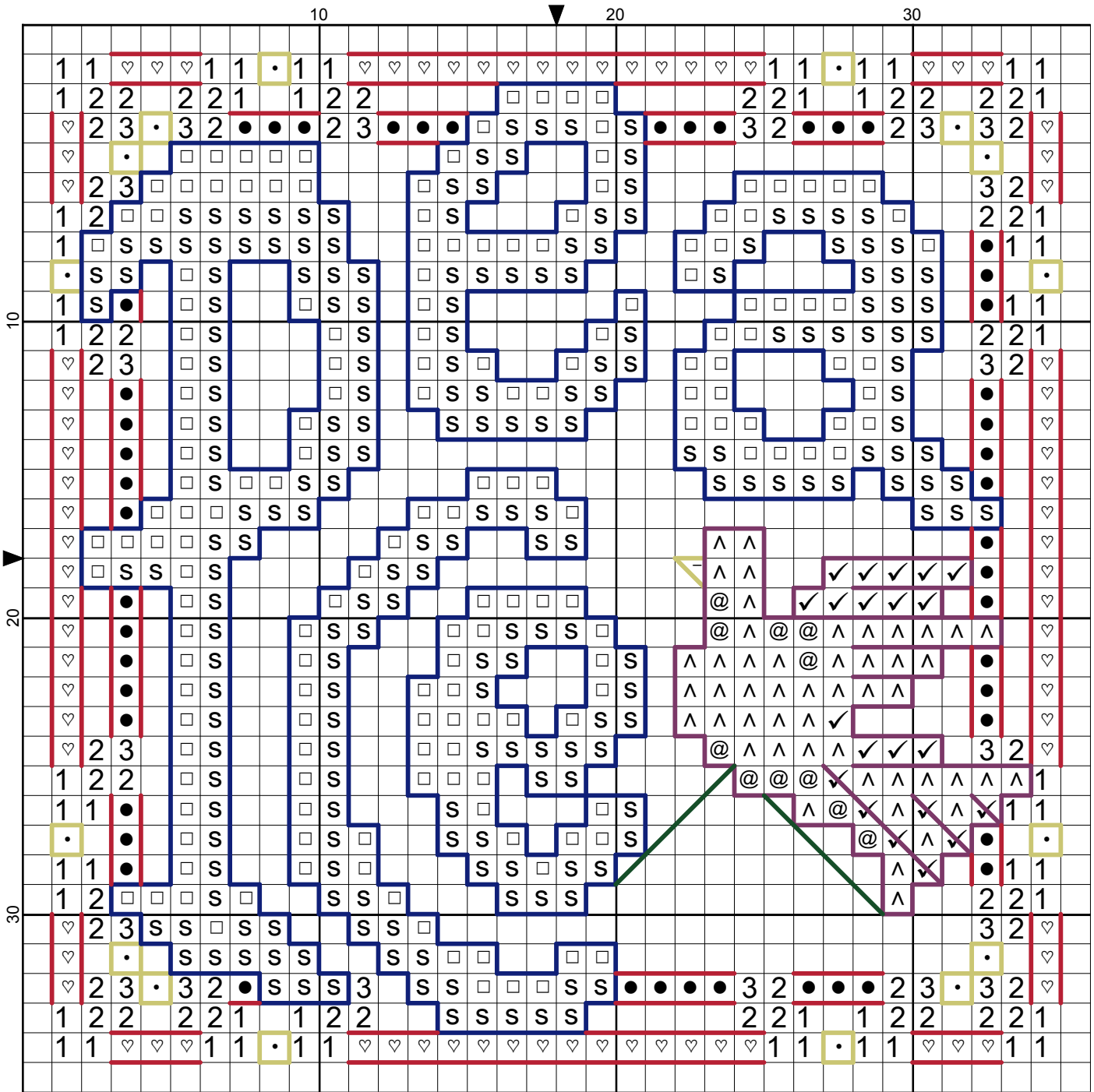


"Christmas Ornament - Peace 2008" by Katherine Martin Tripp



Legend:

- |   |         |   |         |   |         |   |           |   |         |   |         |
|---|---------|---|---------|---|---------|---|-----------|---|---------|---|---------|
| 1 | DMC-890 | 2 | DMC-909 | 3 | DMC-701 | . | DMC-White | S | DMC-796 | @ | DMC-554 |
| • | DMC-321 | ♥ | DMC-304 | □ | KRE-002 | □ | DMC-798   | △ | DMC-153 | ✓ | DMC-553 |

Backstitches:

- |   |         |   |         |   |         |   |         |   |         |
|---|---------|---|---------|---|---------|---|---------|---|---------|
| — | DMC-890 | — | DMC-304 | — | KRE-002 | — | DMC-796 | — | DMC-552 |
|---|---------|---|---------|---|---------|---|---------|---|---------|

# Christmas Ornament - Peace 2008



**Author:** Katherine Martin Tripp  
**Company:** Extra Mile Mercantile  
**Copyright:** Katherine Martin Tripp  
**Website:** www.better-cross-stitch-patterns.com  
**Fabric:** Aida or Evenweave  
**Grid Size:** 36W x 36H  
**Design Area:** 2.43" x 2.43" (34 x 34 stitches)

## Legend:

	DMC 890 pistachio green - ul dk		DMC 701 christmas green - lt		DMC 796 royal blue - dk
	DMC 321 christmas red		KRE 002 Gold		DMC 153 violet - vy lt
	DMC 909 emerald green - vy dk		DMC White white		DMC 554 violet - lt
	DMC 304 christmas red - md		DMC 798 delft blue - dk		DMC 553 violet

## Backstitch Lines:

	DMC-890 pistachio green - ul dk		KRE-002 Gold		DMC-552 violet - md
	DMC-304 christmas red - md		DMC-796 royal blue - dk		

## In the Photograph:

I embroidered "Christmas Ornament - Peace" on 14-count Aida with DMC 6-strand cotton floss, accented it with gold Kreinik Metallic floss. The front and back are stitched on two separate squares, then connected with half stitches. The ornament is padded, then finished off with a gold ribbon hanger and surrounding fringe.

You get the best of both worlds with this set of ornaments--beautiful and sophisticated designs that are quick and easy to complete. This is a great project for beginners or youth, while experienced stitchers will be thrilled with how many they can complete in a short amount of time. These are perfect gifts for coworkers, teachers, friends, family--either singly or as a set.

## Stitch Complexity:

Full cross stitches, half stitches, backstitches, straight stitches, and French knots. Sparkle is added to the dove with metallic half stitches on top of the cross stitches. For detailed stitch diagrams click on the "How to" button.

## How to Cross Stitch this Design:

If you already know how to cross stitch, the checklist below will get you on your way. Just learning? Simply click on the "Getting Started" button in the menu on the left of our website. There, you will find links to additional instructions and diagrams.

## Quick Start

### Step 1 - Review this Chart

Eliminate surprises by reading these instructions and reviewing the chart thoroughly before you begin stitching. Identify and learn any unfamiliar stitches listed in "Stitch Complexity" above.

There are four pattern pages:

- One charts the front design . . . (These instructions follow this page.)
- a second charts the back. To allow for the fringe, both of these include an extra half inch of fabric on all four sides of the the stitched design (increase this if you'd like longer fringe; reduce it for shorter fringe). **Note:** In order to not cover up the underlying cross stitches, the front pattern does not include all of the straight stitches that will ultimately make up the branches.
- The third page shows the dove detail. It is first stitched with full cross stitches in the DMC cotton floss. Next, it is stitched over with half stitches using the Krenik metallic floss. Use only the half stitch diagram that matches the direction of the top diagonal of the underlying DMC stitches.
- A fourth page illustrates how to stitch these branches, with each subsequent level of straight stitches shown individually. The red and gold lines are used only to distinguish the stitches. Use the correct floss colors from the legend when stitching the branches onto the Peace ornament.

### Step 2 - Select and Prepare Your Fabric

To stitch the design exactly as it is in the photograph, simply use the materials described. If you decide to use a fabric other than 14-count, consider how large you want the finished ornament to be (be sure to include the fringe in these measurements). If you are using the design on a greeting card or in a frame, you can eliminate the fringe and simply add enough around the edges for mounting. Be generous--it's easy enough to cut away unwanted fabric after the stitching is done.

Bright white Aida really stands out on a green tree. But if you like your decorations to have an "antique" feel, try using off-white or cream fabric.

If you are indeed making this design into an ornament, there is no need to treat the edges. You will *want* the edges to "fray" easily when making them into fringe.

If this is not your first cross stitch project, this design is still small enough to eliminate the gridlines. Review our page on "Preparing Fabric" for other tips and techniques.

### *Step 3 - Select and Prepare Your Floss*

Use the colors listed above or substitute ones of your own. If using fabric with a different thread count, you may need to adjust the number of strands of floss you'll use. To help you decide, click the "How To..." button on the left menu. At the bottom of the page, you'll find a Floss Coverage link. This page shows cross stitch examples using from one to six strands on fabric with different thread counts. Still uncertain? Work a few sample stitches in the corner of your fabric.

**DMC Floss:** As you use each of the DMC cotton floss colors, cut the floss into strips 15" to 18" long. For fuller and thicker stitches, separate all six strands and then recombine them into the number of strands you will ultimately use.

I discovered, while stitching the "Joy" ornament, that the red borders (DMC #304 and 321) seemed to be bleeding into the fabric (despite being kept perfectly dry). I ran several strands of each under cold water, gently working in a small drop of mild dishwashing detergent. To my surprise, I laid it on a white towel and my suspicions were confirmed--the red ran! I repeated the process above until no more color leached. It dried in no time, and showed no discernable color fading. Even though I did not plan for the ornament to ever get wet, I felt more confident knowing now it wouldn't matter.

**Kreink Metallic Floss:** Cut the Kreink Metallic floss into strips 12" to 15" long, as metallics tend to separate and break after prolonged stitching. Do not use the sewing method with metallic floss. To stitch over areas already cross-stitched with DMC floss, switch to a slightly larger needle. This makes a bigger hole for the metallic floss to slip through. Because there is less friction on the metallic floss, it will separate and break less often.

Because of this specialty floss, this design is not meant to be stitched on fabric that will be worn, washed or ironed. However, if you do want to use it in this manner (napkins, bread cloths, clothing, etc.), simply eliminate the metallic floss overstitching.

### *Step 4 - Stitch the Design*

Each square containing a symbol represents one stitch; the legend indicates which color to use.

I like the stability and strength of Aida for these ornaments. But if you prefer something with an obvious over-under weave (like linen), the placement of the first stitch is critical. To prevent puckering and to provide stability, the first diagonal of the first stitch must start and end where a vertical fabric thread crosses over a horizontal thread.

Use the following number of strands for the front and back designs:

- Cross stitches - 2 strands
- Backstitches (outlining w/DMC floss) - 1 strand
- Backstitches (outlining the white holly berries with Krenik gold)
- Half stitches (join sides) - 2 strands
- Half stitches (dove w/Krenik floss) 2 strands
- Straight stitches (branches) - 1 strand

- French knot (colon after "from") - 2 strands
- Backstitch text on back of ornament - see below

Follow this order when stitching:

- Cross stitch the entire front design, except for the tree branches and dove, and outline with backstitches where indicated.
- Dove: Fill in the dove with cross stitches using DMC floss. Then, using 2 strands of the Krenik lilac metallic floss, overstretch the dove with backstitches. Choose the pattern diagram where the backstitches are slanted in the same direction as the top diagonal of the underlying cross stitch. Outline the dove with backstitches
- Branches: Stitch the branches with straight stitches. Follow the pattern in order from top to bottom. Use the colors on the legend in these steps: 1=center stem (shown here in dark green), 2=first layer of needles (shown in medium green), 3=second layer of needles (shown in gold), 3=third layer of needles (shown in red), 4=repeat the center stem again.

You do not need to follow the branch stitching exactly. If you get the second layer done and like the look, stop there. I actually considered stopping after the center stem and first needles were stitched. As always, stitch to please yourself. This is what makes every cross stitch piece unique.

- Cross stitch the corners on the back design as charted.
- Backstitch the letters:
  - 2 strands in dark blue for Merry Christmas (using Alphabet 06)
  - 2 strands in lavender DMC for the year (using Alphabet 06)
  - 1 strand in metallic lilac stitched on top of the year
  - 1 strand in green for the "to" name (using Alphabet 02)
  - 1 strand in red for the "from" name (using Alphabet 02)

Select the "Graph Paper" button on the left menu to print blank graph paper. Next, select the "Free Alphabets" button to print

patterns for the lettering. Click on "Alphabet 123's for help with lettering.

*Step 5 - Assemble the Ornament*

Align the corners of the front and back designs, wrong sides together. Using half stitches in the fabric row immediately surrounding the design, stitch across the top of the ornament. See detailed diagrams and instructions by clicking "Join Sides" from the buttons on the left.

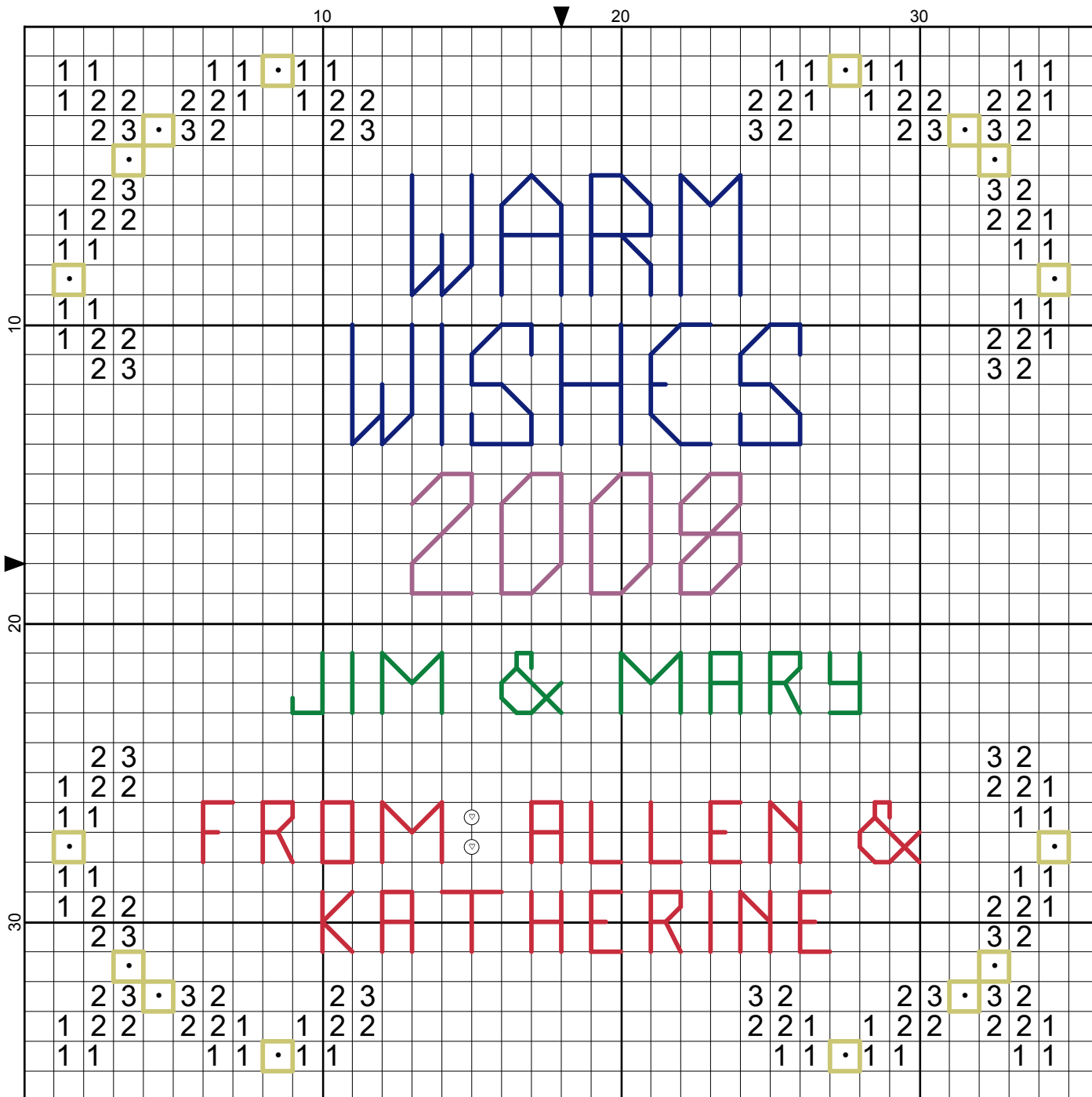
Thread a narrow ribbon through a larger needle in the same way you thread floss. Bring your needle up through the top center hole of the ornament front. Then go down through the top center hole of the ornament back. Adjust the length of the loop, then tie the raw ends together (these knotted ends will ultimately be inside the ornament).

Stitch the remaining sides together. Stop when you have only one half of one side left open. Lightly stuff the inside with batting or other filler to about 1/2 inch thick.

Stitch the ornament closed. Bury the end of the floss by running your needle into the center of the stuffed ornament, then out again. Pull the floss taut, and cut. Flatten the ornament, and the ends should disappear back into the center of the ornament padding.

Leave the fabric edges the length they are, or trim them to your preference. Pull away the horizontal rows of cloth on each side to make the fringe. See detailed diagrams and instructions by clicking "Make Fringe" from the buttons on the left.

"Christmas Ornament - Peace 2008" by Katherine Martin Tripp



Legend:

① ■ DMC-890    ② ■ DMC-909    ③ ■ DMC-701    ◦ □ DMC-White

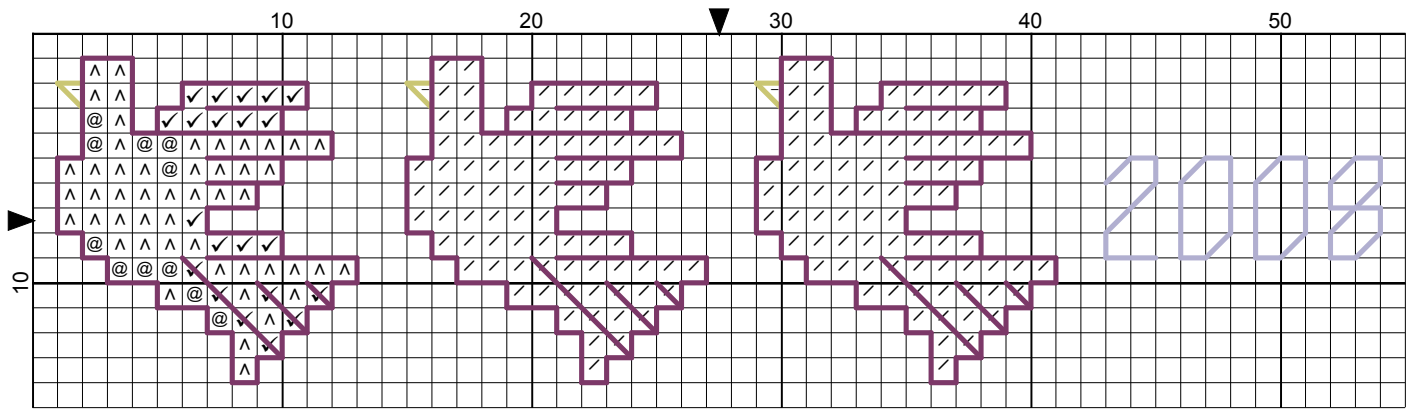
Backstitches:

— DMC-321    — DMC-909    — KRE-002    — DMC-796    — DMC-553

French Knots:

◦ DMC-304

"Christmas Ornament - Peace 2008" by Katherine Martin Tripp



Legend:

- |               |  |         |  |         |         |         |  |         |  |  |         |  |  |         |
|---------------|--|---------|--|---------|---------|---------|--|---------|--|--|---------|--|--|---------|
|               |  | KRE-002 |  |         | DMC-153 |         |  | DMC-554 |  |  | DMC-553 |  |  | KRE-023 |
| Backstitches: |  |         |  |         |         |         |  |         |  |  |         |  |  |         |
|               |  | KRE-002 |  | DMC-552 |         | KRE-023 |  |         |  |  |         |  |  |         |

