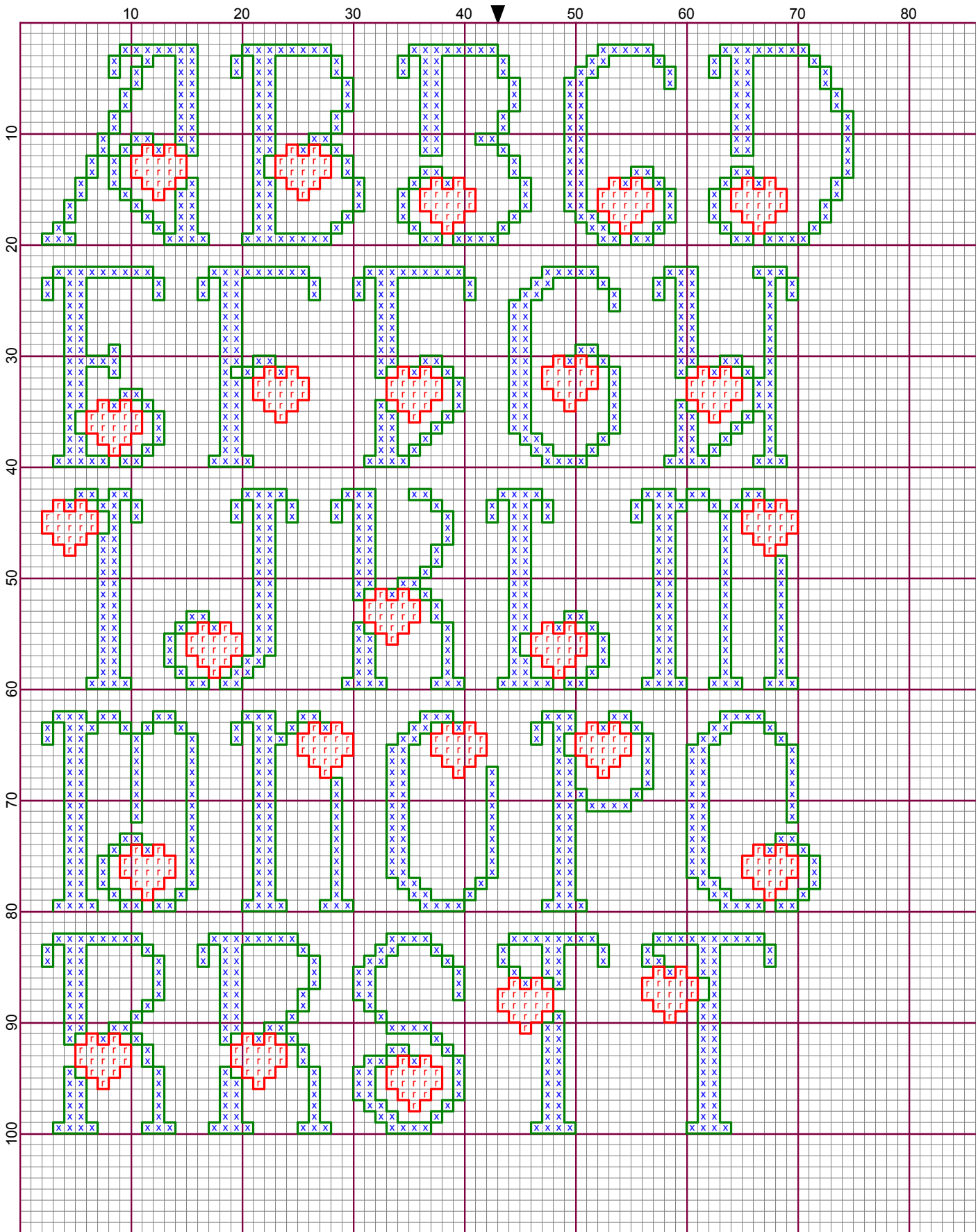
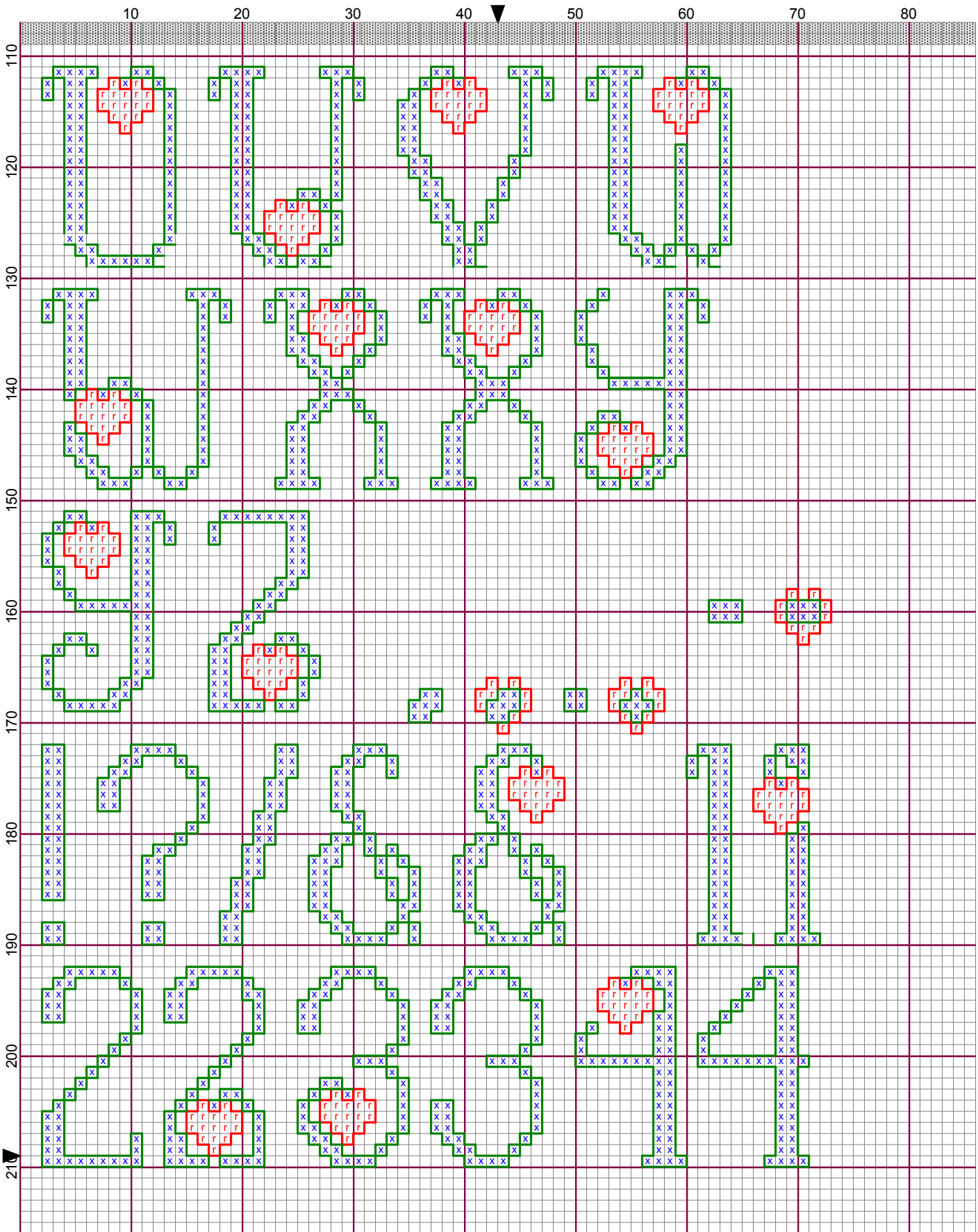


Cross Stitch Alphabet 33 - "Beloved" Courtesy of www.better-cross-stitch-patterns.com



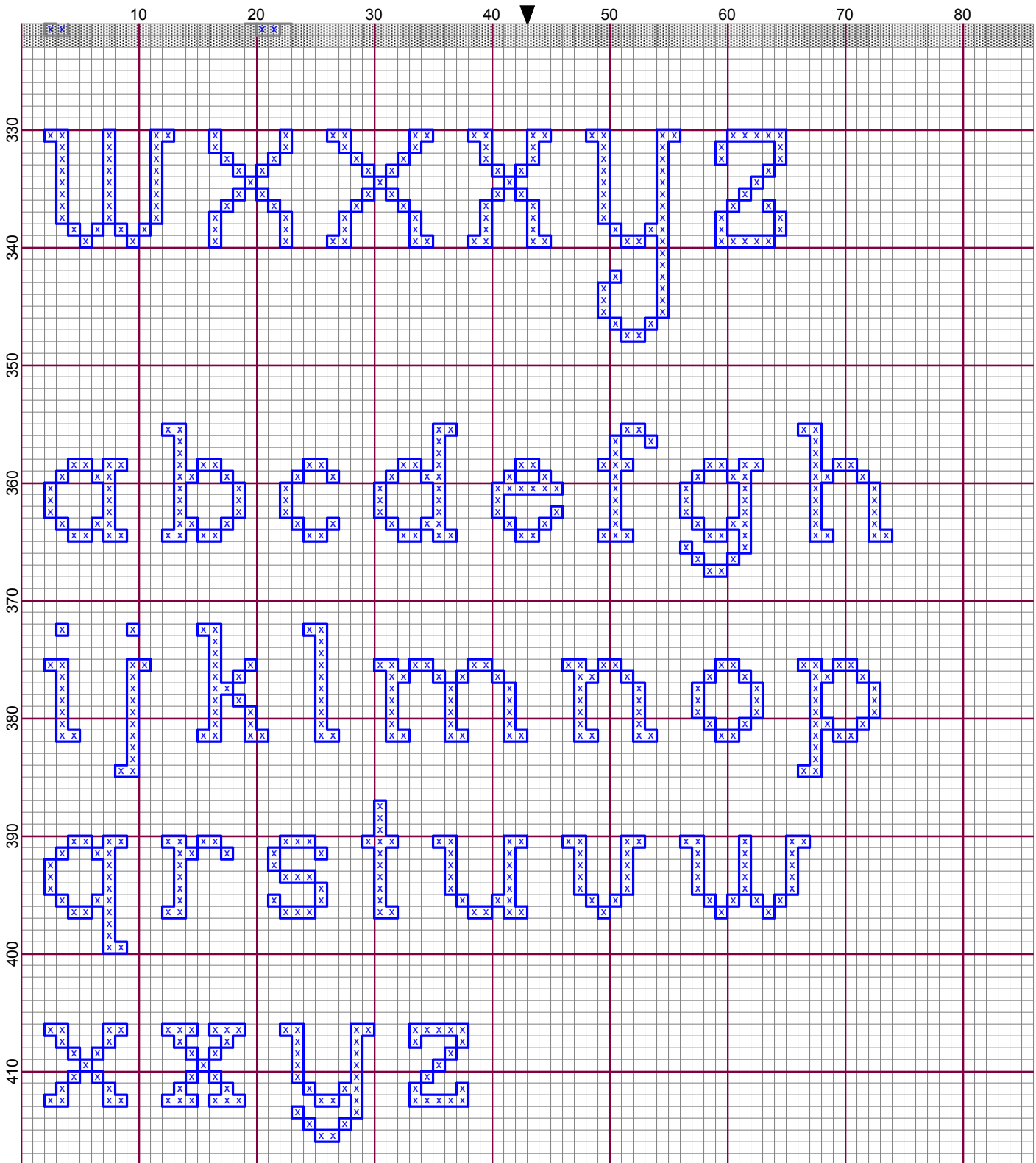
Cross Stitch Alphabet 33 - "Beloved" Courtesy of www.better-cross-stitch-patterns.com



Cross Stitch Alphabet 33 - "Beloved" Courtesy of www.better-cross-stitch-patterns.com



Cross Stitch Alphabet 33 - "Beloved" Courtesy of www.better-cross-stitch-patterns.com



Legend:

x DMC-310 black

r DMC-666 christmas red - br



Cross Stitch Alphabet 33 - "Beloved"



Author: Katherine Martin Tripp
Company: Extra Mile Mercantile
Copyright: Katherine Martin Tripp
Website: www.better-cross-stitch-patterns.com
Grid Size: 86W x 418H
Design Area: 7.30" x 41.40" (73 x 414 stitches)

Legend:

  [2] DMC 310 black

  [2] DMC 666 christmas red - br

Backstitch Lines:

 DMC-310 black

 DMC-666 christmas red - br

 KRE-002 Gold

"Alphabet 33 - Beloved" features tall, decorative upper case letters with a bright red heart tucked into the curves. The letters are stitched in elegant black and outlined with gold metallic floss. Use them alone or combine them with one of the two lower case letter sets, stitched and outlined in black.

When stitched on 14-count Aida, with DMC floss:

- 2 strands for cross stitches
- 1 strand for backstitches

Description: Graphic letters, standard/straight.

Characters Included:

- Upper Case Letters (some letters have two style options)
- Numbers with and without hearts
- Punctuation, some with and without hearts
- Lower Case Letters - Tall and Short versions

Height:

- The upper case letters and numbers are 18 stitches high.

Tall lower case letter set -

- The lower case letters without ascenders or descenders (ex: a, c, o) are 10 stitches high.
- The lower case letters with only ascenders (ex: b, d, h) or only descenders, (ex: g, p, y) are 18 stitches high.
- The lower case "j", with descender plus dot above, is 26 stitches high.

Short lower case letter set -

- The lower case letters without ascenders or descenders (ex: a, c, o) are 7 stitches high.
- The lower case letters with only ascenders (ex: b, d, h) or only descenders, (ex: g, p, y) are 10 stitches high.
- The lower case "j", with descender plus dot above, is 13 stitches high.

Width: These letters have varying widths. Most of the upper case letters are 10 to 12 stitches wide, with one W maxing out at 17. The majority of the lower case letters are 5 to 8 stitches wide..

Stitch Complexity:

- Full Cross Stitches
- Backstitches

Unfamiliar with these stitches? Check out our tutorials- they have with detailed diagrams and easy-to-understand instructions.

Floss: Use the same colors reflected in the design, or substitute ones of your own.

If using fabric with a different thread count, you may need to adjust the number of strands of floss you'll use. To help you decide, refer to our "Coverage" tutorial. It shows cross stitch examples using from one to six strands on fabric with different thread counts.

How to Fit Text into a Design: Learn how to select and adapt cross stitch alphabets by reviewing "Alphabet 123s" on our website.