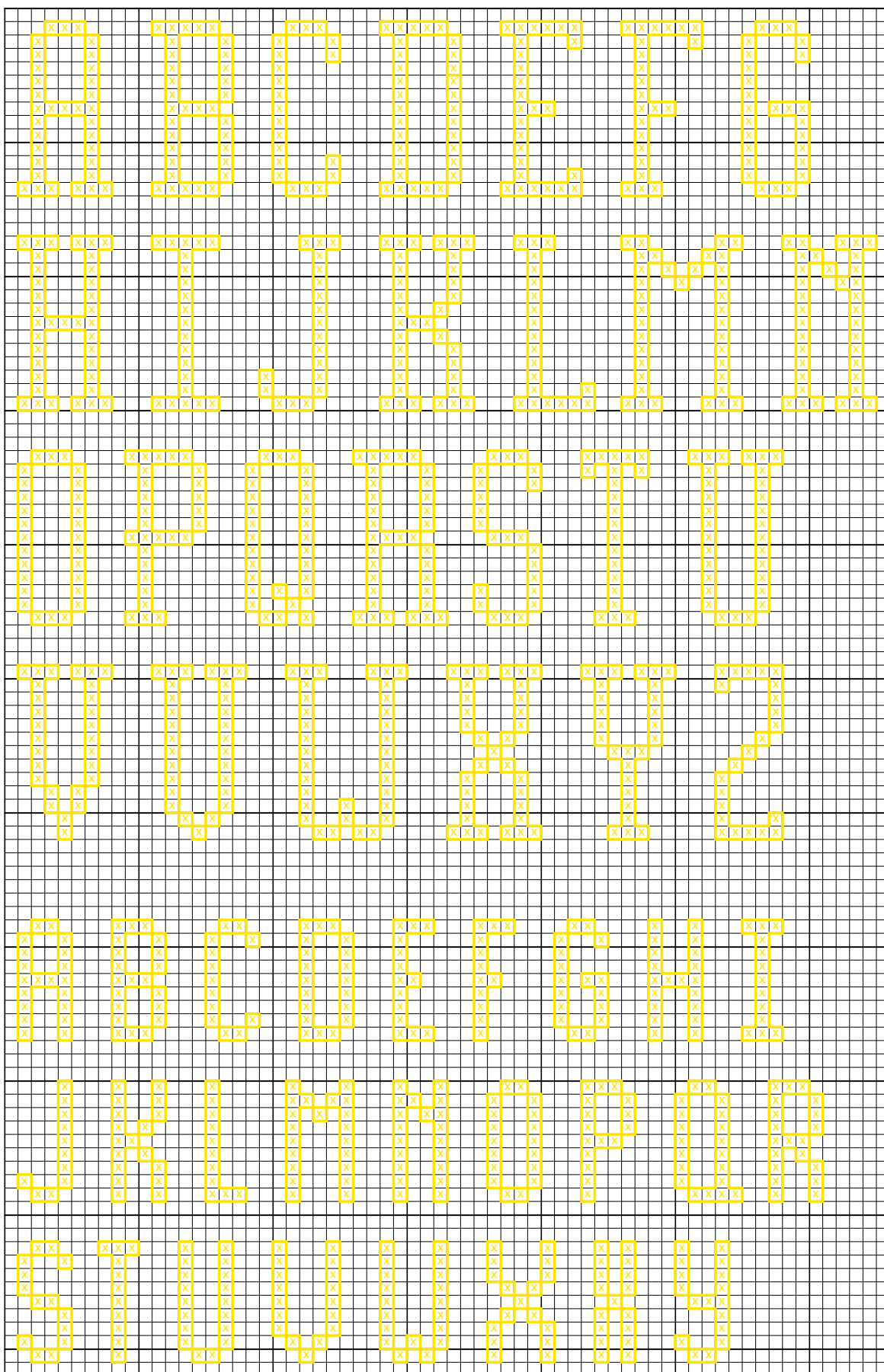


"Alphabet 26 - Basic Block 13 ct" by Katherine Martin Tripp



"Alphabet 26 - Basic Block 13 ct" by Katherine Martin Tripp



# Alphabet 26 - Basic Block 13 ct



**Author:** Katherine Martin Tripp  
**Company:** Extra Mile Mercantile  
**Copyright:** Katherine Martin Tripp  
**Website:** www.better-cross-stitch-patterns.com  
**Grid Size:** 66W x 195H  
**Design Area:** 4.57" x 13.79" (64 x 193 stitches)

## In the Example:

Here is an elongated version of Basic Block 11 ct. "**Alphabet 26 - Basic Block 13 ct**" is two stitches higher while maintaining the same width. Look closely at both alphabets and you can see how to easily alter an existing letter set.

Need it to be wider as well? Grab a pencil (and eraser!) and print out our free graph paper. Then, just insert an extra stitch or two in the middle or on either end, depending on the letter.

Again, this alphabet uses "small caps" for the lower case characters, providing you with yet another alphabet to use when you need letters only 9 stitches high.

When stitched on 14-count fabric using DMC floss, use:

- 2 strands for cross stitches
- 1 strand for backstitches

## Description:

Block letters, standard/straight.

## Characters Included:

- Upper Case Letters
- Lower Case Letters
- Numbers
- Punctuation

## Height:

- The upper case letters are 13 stitches high.
- The lower case letters are 9 stitches high.

## Width:

The upper case letters have varying widths; most are 5 to 7 stitches wide. The lower case letters are 3 to 5 stitches wide.

## Stitch Complexity:

- Cross Stitches
- Backstitches

This is an easy-to-stitch alphabet that uses only full cross stitches and backstitches. If these stitches are unfamiliar to you, click on the "Backstitch" and the "Cross Stitch" buttons on the left menu, under the "Tutorials" section.

## Floss:

It is assumed that you will change the floss color to reflect your tastes and to coordinate with the rest of your project. Use the same number of strands that you are using throughout the rest of your cross stitch pattern.

## How to Fit Text into a Design:

Learn how to select and adapt cross stitch alphabets by clicking on the "Alphabet 123s" button on the left menu.