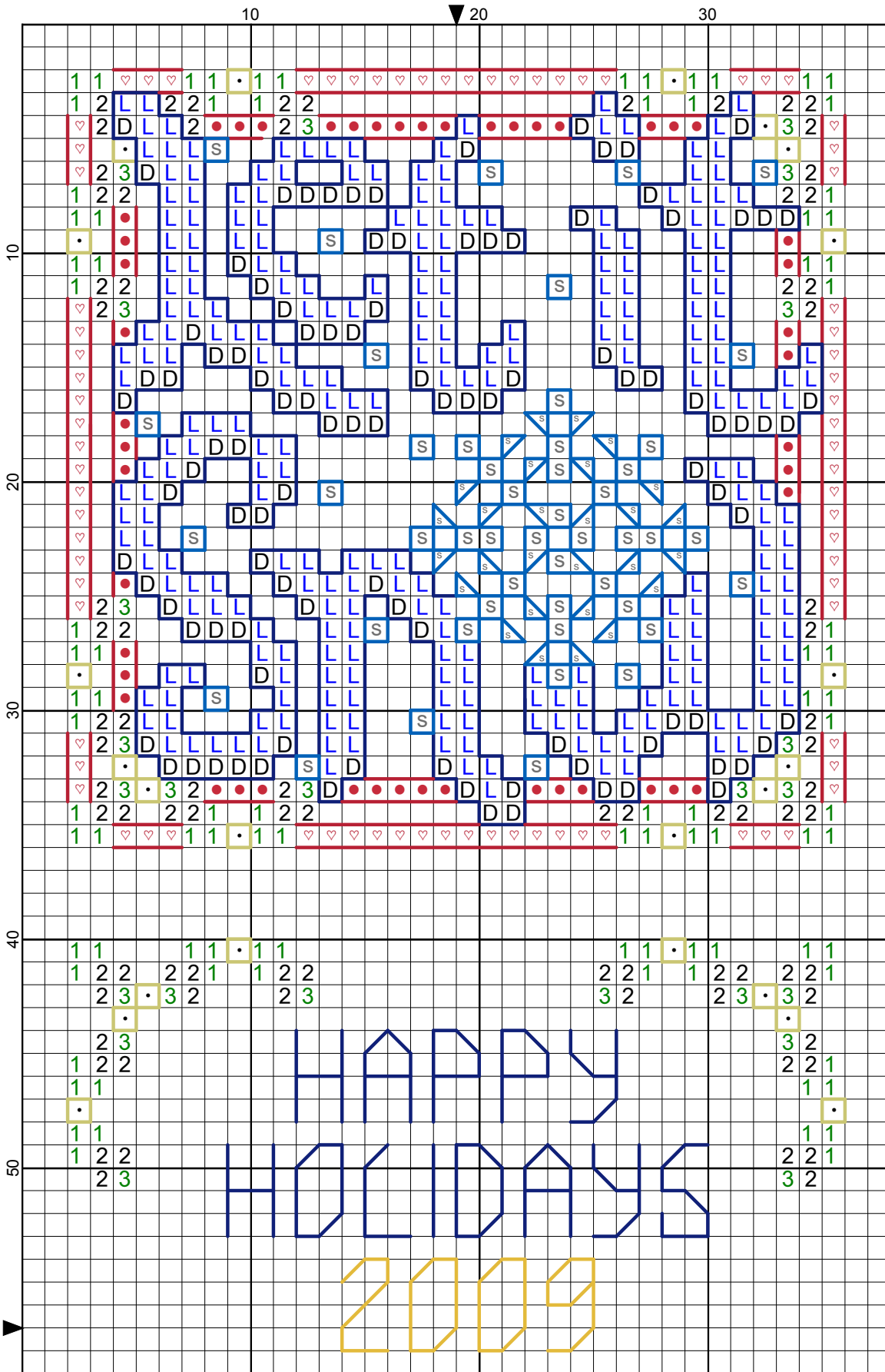
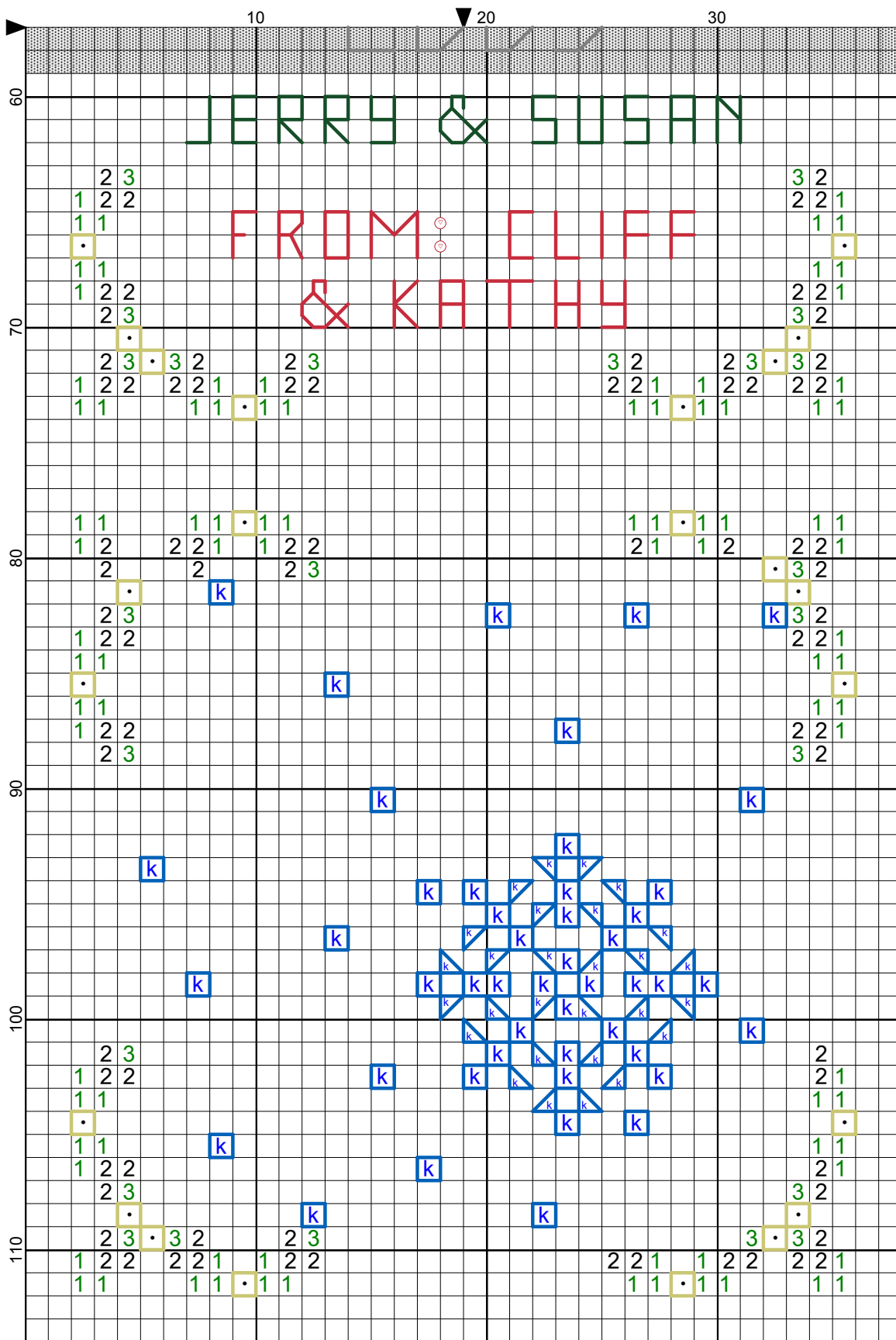


"Christmas Ornament - Let It Snow 2009" by Katherine Martin Tripp



- Legend:
- S DMC-3747
 - 3 DMC-701
 - 2 DMC-321
 - 1 DMC-304
 - L DMC-798
 - 2 DMC-909
 - 1 DMC-890
 - D DMC-796
 - . DMC-White
 - K KRE-032
- Backstitches:
- DMC-321
 - DMC-304
 - DMC-890
 - DMC-796
 - DMC-3820
 - KRE-006HL
 - KRE-002
- French Knots:
- o DMC-304



Christmas Ornament - Let It Snow 2009



Author: Katherine Martin Tripp
Company: Extra Mile Mercantile
Copyright: Katherine Martin Tripp
Website: www.better-cross-stitch-patterns.com
Grid Size: 38W x 114H
Design Area: 2.43" x 7.86" (34 x 110 stitches)

Legend:

	DMC 3747	blue violet - vy lt		DMC 798	delft blue - dk		DMC White	white
	DMC 701	christmas green - lt		DMC 909	emerald green - vy dk		KRE 032	Pearl
	DMC 321	christmas red		DMC 890	pistachio green - ul dk			
	DMC 304	christmas red - md		DMC 796	royal blue - dk			

Backstitch Lines:

	DMC-321	christmas red		DMC-796	royal blue - dk		KRE-002	Gold
	DMC-304	christmas red - md		DMC-3820	straw - dk			
	DMC-890	pistachio green - ul dk		KRE-006HL	Blue Hi Lustre			

French Knots:

- DMC-304 christmas red - md

In the Photograph:

I embroidered "**Christmas Ornament - Let It Snow**" on 14-count Aida with DMC 6-strand cotton floss, accented it with Kreinik Metallic floss. The front and back are stitched on two separate squares, then connected with half stitches. The ornament is padded, then finished off with a gold ribbon hanger and surrounding fringe.

What You'll Need:

- Fabric
- DMC (or other 6-strand cotton) Floss
- Kreinik (or other metallic) Floss
- Ribbon for hanging loop

Stitch Complexity:

- Full cross stitches
- 1/4 and 3/4 cross stitches (snowflake only)
- Backstitches
- Half stitches (for sewing sides together)
- French knots (for colon after "From")

If you are unfamiliar with any of these stitches, click on the buttons under the "Tutorials" section of the left menu of our website. There, you will find detailed diagrams and instructions for each stitch.

How to Cross Stitch this Design:

If you already know how to cross stitch, the instructions below will get you on your way. Just learning? Simply click on the "Getting Started" button on the left menu under Tutorials.

Step 1 - Review this Chart

Eliminate surprises by reading these instructions and reviewing the chart thoroughly before you begin stitching. Identify and learn any unfamiliar stitches listed in "Stitch Complexity" above.

- The first chart: shows the front design to be stitched with cotton floss. Note that the white half stitches surrounding the perimeter are the stitches you will use to "sew" the front piece to the back piece.
- The second chart: shows the back design. The sentiment, year and personalized "to" and "from" are shown here for placement. You can use Alphabets 2 and 6 to customize these elements for yourself. Outline the berries with Kreinik gold.
- The snowflake chart: shows where to stitch with Kreinik on the front. Use Kreinik blending filament to stitch over the existing DMC stitches. Use the Kreinik blue to outline the snow. Use Kreinik gold to outline the white berries. Some of the other stitches are shown here to help you keep your place.

Disregard the fabric and design measurements listed under "Grid Size" and "Design Area" at the top of this page. The ornament is 36 stitches square, including the single row of half stitches used to "sew" the front to the back. For fringe, add an extra half inch of fabric on all four sides (increase this if you'd like longer fringe; reduce it for shorter fringe).

Step 2 - Select and Prepare Your Fabric

For an ornament exactly like the photograph, you will need two identical pieces of 14-count Aida. Each should be 36 stitches wide for

the stitching area, plus 1/2 inch on all four sides for fringe. Add another 1/2 half inch fudge factor on all sides, and each piece of fabric should be 64 stitches square.

If you have a favorite fabric type and thread count, or if you have a specific size in mind for the finished piece, translate inches to thread count to determine your initial fabric size (be sure to include enough around all sides to make fringe or to mount the finished piece). Need help converting? Click on the "Stitch Counts" button on the left menu under Resources for an easy formula and a handy table.

Bright white Aida really stands out on a green tree. But if you like your decorations to have an "antique" feel, try using off-white or cream fabric.

If you are making this design into an ornament with fringe, there is no need to treat the edges.

This design is small enough to eliminate the gridlines. Review our page on "Preparing Fabric" for other tips and techniques.

Step 3 - Select and Prepare Your Floss

Use the colors listed above or substitute ones of your own. If using fabric with a different thread count, review "Floss Coverage" on the left menu to decide whether to adjust the number of strands of floss. Still uncertain? Work a few sample stitches in the corner of your fabric.

- Cotton Floss: Prepare your floss as described in Step 3 from the "Getting Started" button on the left menu. "Separating Floss" will show you a quick and easy method for separating your floss strands.
- Kreinik Metallic Floss: Specialty flosses often require a little extra care when handling. Select the "How To" button on the left menu and go to the bottom of the page. The "Metallic Floss" link will help. If you want to use this design on something that requires frequent laundering (napkins, bread cloths, clothing, etc.), and don't want to hand launder, consider replacing the specialty floss with cotton floss.

Step 4 - Stitch the Design

Each square containing a symbol represents one stitch; the legend indicates which color to use.

If you are using a fabric with an obvious over-under weave (like linen), the placement of the first stitch is critical. Click on the "Over Two Threads" button and follow our illustrations.

Use the following number of strands for the front:

- Cross stitches with DMC - 2 strands
- Cross stitches with Kreinik blending filament (over existing snowflake cross stitches) - 1 strand
- Backstitches with DMC - 1 strand
- Backstitches with Kreinik metallic gold (berries) - 1 strand
- Backstitches with Kreinik metallic blue (snowflakes) - 1 strand
- Half stitches (join sides) - 2 strands

Use the following number of strands for the back:

- Cross stitches with DMC - 2 strands
- Backstitch holly with Kreinik metallic gold - 1 strand
- Backstitch Happy Holidays with DMC (using Alphabet 06) - 2 strands
- Backstitch year with DMC - 2 strands
- Backstitch year with Kreinik (over existing stitches) - 1 strand
- Backstitch names with DMC - 1 strand
- French knot (colon after "from") - 2 strands

Follow this order when stitching:

- Front: Cross stitch and backstitch the front design with DMC. Backstitch the berries with Kreinik metallic gold.
- Snowflake: With Kreinik blending filament, stitch over the existing cross stitches as shown. Outline the snowflakes with Kreinik metallic blue.
- Back: Cross stitch the corners and backstitch the lettering with DMC. Using Kreinik gold, backstitch over the year and outline the berries. To chart your text, select the "Graph Paper" button on the left menu to print blank graph paper. Use Alphabets 2 and 6 for your letters. Click on "Alphabet 123's for help.

Step 5 - Assemble the Ornament

- Sew across the top by aligning the corners of the front and back designs, wrong sides together. Using half stitches in the fabric row immediately surrounding the design, stitch across the top of the ornament. See detailed diagrams and instructions by clicking "Join Sides" from the buttons on the left.
- Add a ribbon hanger by threading a narrow ribbon through a larger needle in the same way you thread floss. Bring your needle up through the top center hole of the ornament front. Then go down through the top center hole of the ornament back. Adjust the length

of the loop, then tie the raw ends together (these knotted ends will ultimately be inside the ornament).

- *Stitch the remaining sides* together. Stop when you have only one half of one side left open.
- *Lightly stuff the inside* with batting or other filler to about 1/2 inch thick.
- *Stitch the ornament closed.* Bury the end of the floss by running your needle into the center of the stuffed ornament, then out again. Pull the floss taut, and cut. Flatten the ornament, and the ends should disappear back into the center of the ornament padding.

Fringe the edges. Either leave the fabric edges the length they are, or trim them to your preference. Pull away the horizontal rows of cloth on each side to make the fringe. See detailed diagrams and instructions by clicking "Make Fringe" from the buttons on the left.